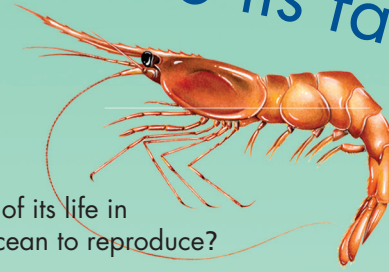




# Can you match the fish to its facts?



SPINY DOGFISH



NORTHERN SHRIMP



AMERICAN LOBSTER

1. What fish lives most of its life in freshwater and returns to the ocean to reproduce?

2. What animal has two claws – one for crushing and one for pinching?

3. What fish is nicknamed chopper because of its razor sharp teeth and powerful jaw?

4. What fish dates back to over 70 million years ago, and can reach a size of 15 feet in length and weigh over 800 pounds?

5. What fish, also known as rockfish, has its largest spawning population in the Chesapeake Bay?

6. What small schooling fish is an important food source for many fish species and is also used to make omega-3 vitamin supplements?

7. What popular Mid-Atlantic fish begins its life as a female and changes to become a male at about 6 years of age?

8. What small but important crustacean uses paddle-like legs, called pleopods, to swim?

9. What flatfish is known for its ability to match its color and pattern to whatever it rests on?

10. What fish lives most of its life in the ocean and returns to freshwater to reproduce?

11. What animal is more closely related to spiders than crabs, and has been around for over 200 million years?

12. What fish gives birth to live young instead of laying eggs?



AMERICAN SHAD



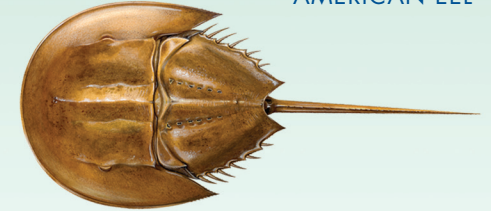
ATLANTIC MENHADEN



STRIPED BASS



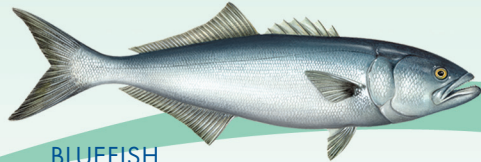
AMERICAN EEL



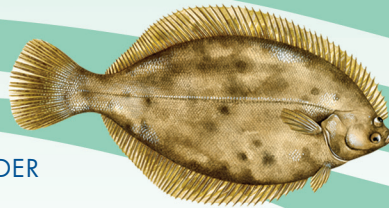
HORSESHOE CRAB



ATLANTIC STURGEON



BLUEFISH



WINTER FLOUNDER



BLACK SEA BASS

Restoring Atlantic Coastal Fisheries ([www.asmfc.org](http://www.asmfc.org))

Answers: (1) American eel, (2) American lobster, (3) Bluefish, (4) Atlantic sturgeon, (5) Striped bass, (6) Atlantic menhaden, (7) Black sea bass, (8) Northern shrimp, (9) Winter flounder, (10) American shad, (11) Horseshoe crab, (12) Spiny dogfish.