



Review of MRIP Preliminary Wave 4 Harvest Estimates for Summer Flounder, Black Sea Bass, and Scup

Summer Flounder, Scup, Black Sea Bass Board
October 25, 2016

Outline



- Review **Preliminary** MRIP harvest estimates through Wave 4 (July/August) by species
 - Compare harvest to recent years
 - Weight
 - Fish
 - Evaluate harvest relative to 2016 RHL
 - Outline 2017 RHL and management implications
 - Questions

Summer Flounder



Coastwide Harvest in Weight (Pounds)

Year	Grand Total	RHL (millions of lbs)	Percent of RHL
2014	6,683,446	7.01	95.34%
2015	4,291,104	7.38	58.15%
2016	5,690,777	5.42	105.00%
Percent Change '15-'16	32.6	-26.6	
Percent Change '14-'16	-14.9	-22.7	

Summer Flounder



State Harvest in Weight (Pounds)

Year	MA	RI	CT	NY	NJ	DE	MD	VA	NC
2014	238,604	635,647	376,566	1,600,659	3,207,157	213,749	61,962	315,901	33,201
2015	108,777	590,461	310,179	1,410,478	1,336,012	98,263	100,859	291,198	44,877
2016	121,790	278,679	690,779	2,238,493	1,904,095	207,311	42,573	190,188	16,869
Percent Change '15-'16	12.0	-52.8	122.7	58.7	42.5	111.0	-57.8	-34.7	-62.4
Percent Change '14-'16	-49.0	-56.2	83.4	39.8	-40.6	-3.0	-31.3	-39.8	-49.2

Summer Flounder



Coastwide Harvest (Numbers of Fish)

Year	Grand Total	RHL	Percent of RHL
2014	2,206,433	2,421,720	91.11%
2015	1,450,463	2,453,037	59.13%
2016	1,869,091	1,881,944	99.32%
Percent Change '15-'16	28.9	-23.3	
Percent Change '14-'16	-15.3	-22.3	

Summer Flounder



State Harvest (Numbers of Fish)

Year	MA	RI	CT	NY	NJ	DE	MD	VA	NC
2014	112,840	184,484	115,495	490,974	1,046,363	86,376	27,226	118,126	24,549
2015	65,059	153,958	81,310	457,183	451,818	41,850	35,539	135,508	28,238
2016	53,293	89,988	218,019	712,643	609,879	82,098	18,537	75,029	9,605
Percent Change '15-'16	-18.1	-41.6	168.1	55.9	35.0	96.2	-47.8	-44.6	-66.0
Percent Change '14-'16	-52.8	-51.2	88.8	45.1	-41.7	-5.0	-31.9	-36.5	-60.9

2017 Summer Flounder Specs



- 2017 Coastwide **Recreational Harvest Limit**
 - 3.77 million lbs
 - Approximately 1.23 million fish*
- Coastwide Reduction for 2017 (from '16)
 - **41% (based on current harvest estimates)**
 - **Season still open in Rhode Island and Delaware thru North Carolina**

Black Sea Bass



Coastwide Harvest in Weight (Pounds)

Year	Northern Region (MA-NJ)	Southern Region (DE-NC)	Coastwide Harvest	RHL (millions of pounds)	Percent of RHL
2015	2,494,293	181,428	2,675,721	2.33	114.84%
2016	3,324,861	167,056	3,491,917	2.82	123.83%
Percent Change for 2015-2016	33.3	-7.9	30.5		

Black Sea Bass



State Harvest in weight (pounds)

Year	MA	RI	CT	NY	NJ	DE	MD	VA	NC	Coastwide Harvest
2015	713,599	193,939	212,006	1,039,847	334,902	15,069	17,973	59,683	88,703	2,675,721
2016	888,775	294,872	801,284	1,020,663	319,267	22,329	20,630	59,466	64,631	3,491,917
Percent Change '15-'16	24.5	52.0	278.0	-1.8	-4.7	48.2	14.8	-0.4	-27.1	30.5

Black Sea Bass



Coastwide Harvest in numbers of Fish

Year	Northern Region (MA-NJ)	Southern Region (DE-NC)	Coastwide Harvest	RHL (millions of fish)	Percent of RHL
2015	1,073,362	121,878	1,195,240	1.13	105.36%
2016	1,626,391	98,049	1,724,440	1.25	136.89%
Percent Change for 2015-2016	51.5	-19.6	44.3		

Black Sea Bass



State Harvest (numbers of fish)

Year	MA	RI	CT	NY	NJ	DE	MD	VA	NC	Coastwide Harvest
2015	338,465	98,676	117,860	290,134	228,227	12,383	13,391	34,440	61,664	1,195,240
2016	380,322	133,077	381,031	504,084	227,877	16,939	16,071	21,424	43,615	1,724,440
Percent Change '15-'16	12.4	34.9	223.3	73.7	-0.2	36.8	20.0	-37.8	-29.3	44.3

2017 Black Sea Bass Specs



- 2017 Coastwide **Recreational Harvest Limit**
 - 2.82 million lbs
 - Approximately 1,259,689 million fish*
- Coastwide Reduction for 2017 (from '16)**
 - **23.8% (based on current harvest estimates)**
 - **Does not include projections**
 - **Season still open from Maine thru North Carolina, exception Massachusetts**

Scup



Coastwide Harvest in Weight (Pounds)

Year	Massachusetts- New York	Coastwide Harvest	RHL (millions of pounds)	Percent of RHL
2015	2,625,089	2,628,188	6.80	38.65%
2016	3,944,614	4,013,273	6.09	65.90%
Percent Change	50.3	52.7		

2017 Scup Specs



- 2017 Coastwide **Recreational Harvest Limit**
 - 5.5 million lbs
 - Reduction of 9.6% from 2016 RHL (6.09 million lbs)

- Coastwide Reduction for 2017 (from '16)
 - **Unknown, but possible**

Things to keep in mind



- Preliminary estimates – will likely change
- Analysis & Time Constraints
 - PSEs not scrutinized
 - Total Catch not evaluated: only harvest (A+B1)
- 2016 Regulations
 - Consider relative to recent years (2014 & 2015)
 - Summer Flounder (little change)
 - Black Sea Bass (significant changes)
 - Scup (no change)



Questions?



2017 Management Options Discussion for Summer Flounder and Black Sea Bass

Summer Flounder, Scup, Black Sea Bass Board
October 25, 2016

Outline



- FMP Management Program by species
 - What's in place for 2017
- Summer Flounder Working Group Call Summary
 - Review of possible Management Options
 - Discussion highlights
- Next steps
- Questions

Current FMP Options



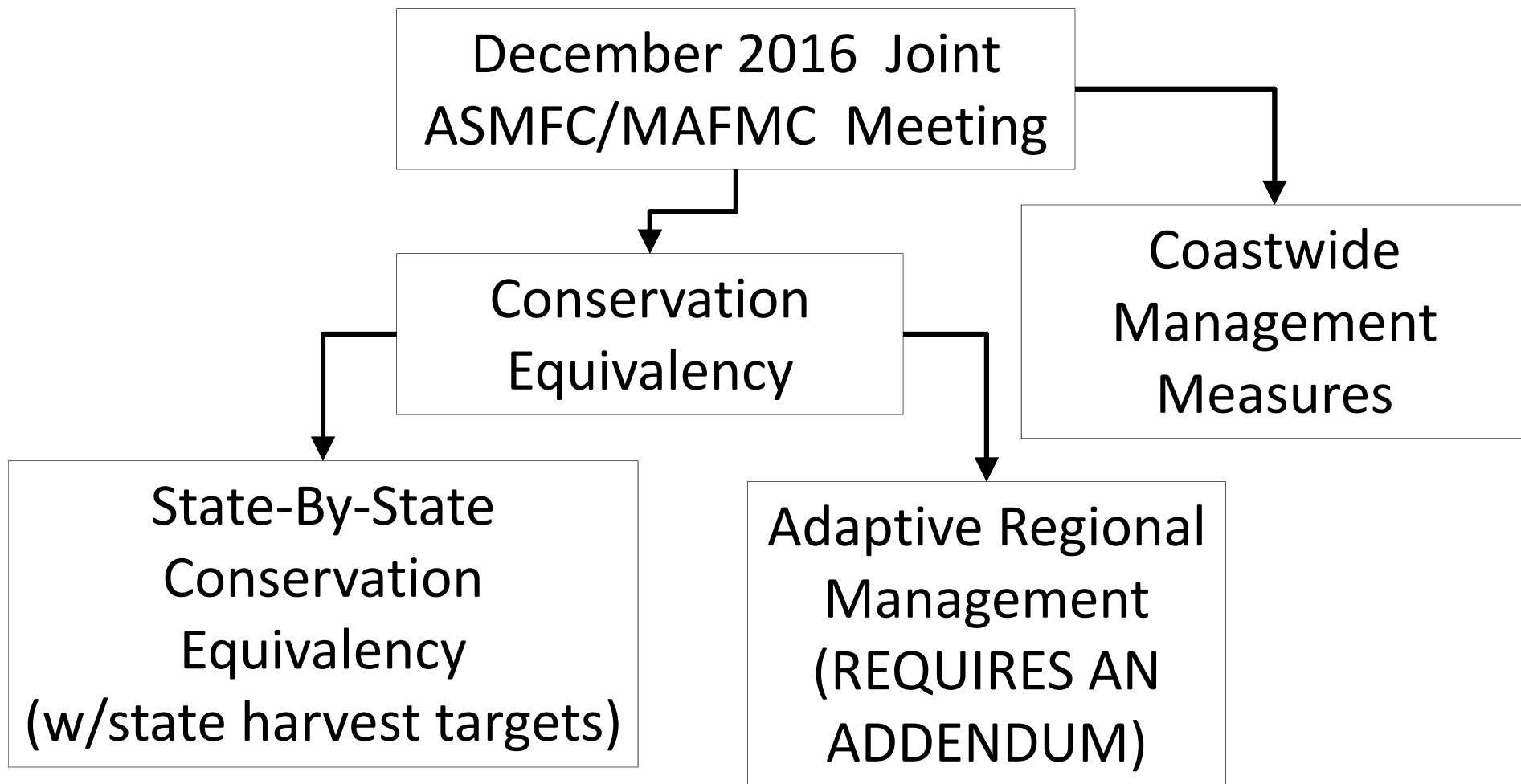
Addendum XXVII (2016)

- Summer Flounder
 - No regional management option for 2017
 - Coastwide Measures or State-by-state Conservation Equivalency
- Black Sea Bass
 - Ad-Hoc regional management can be extended to 2017

2017 Summer Flounder Management



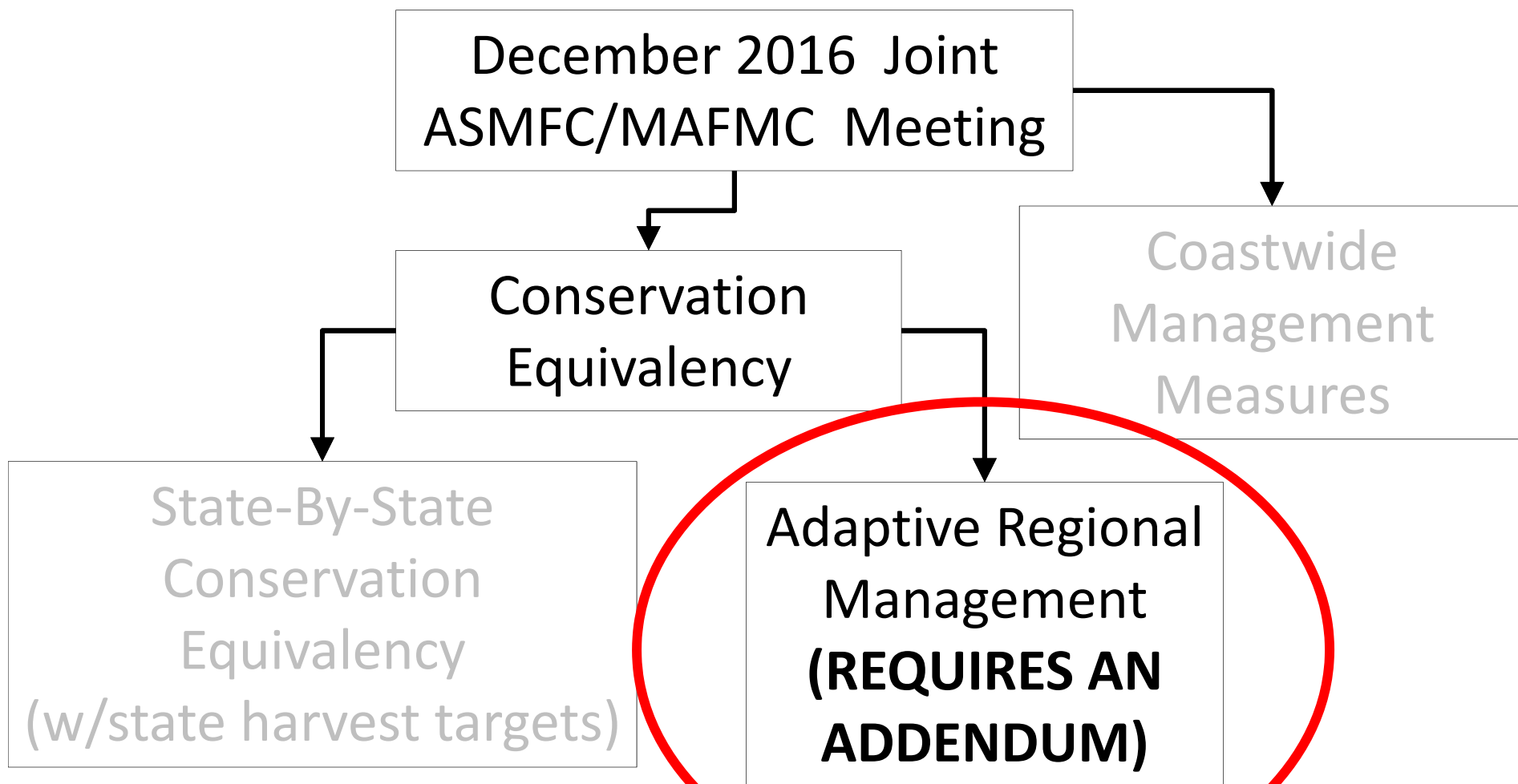
Annual Decision Tree



2017 Summer Flounder Management



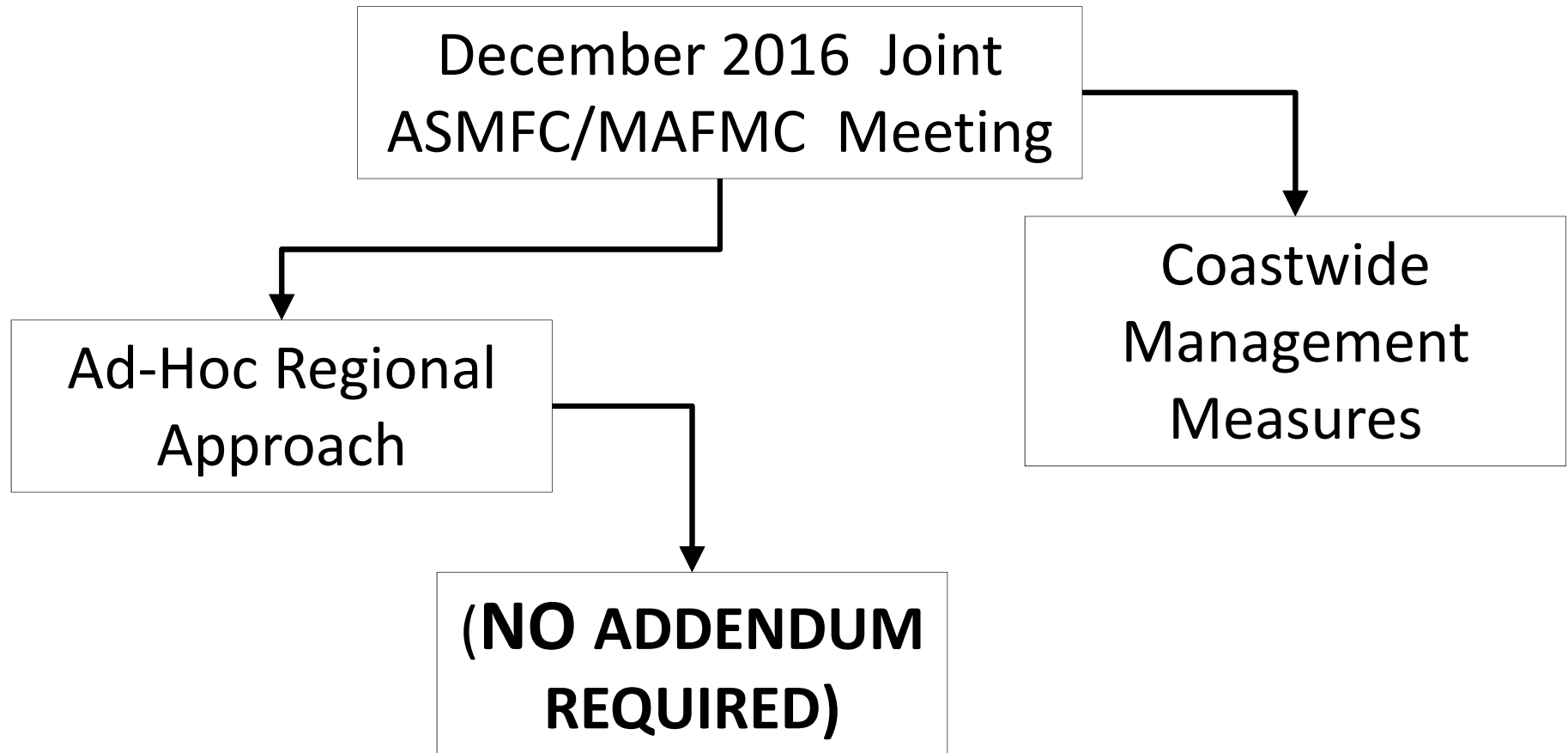
Annual Decision Tree



2017 Black Sea Bass Management



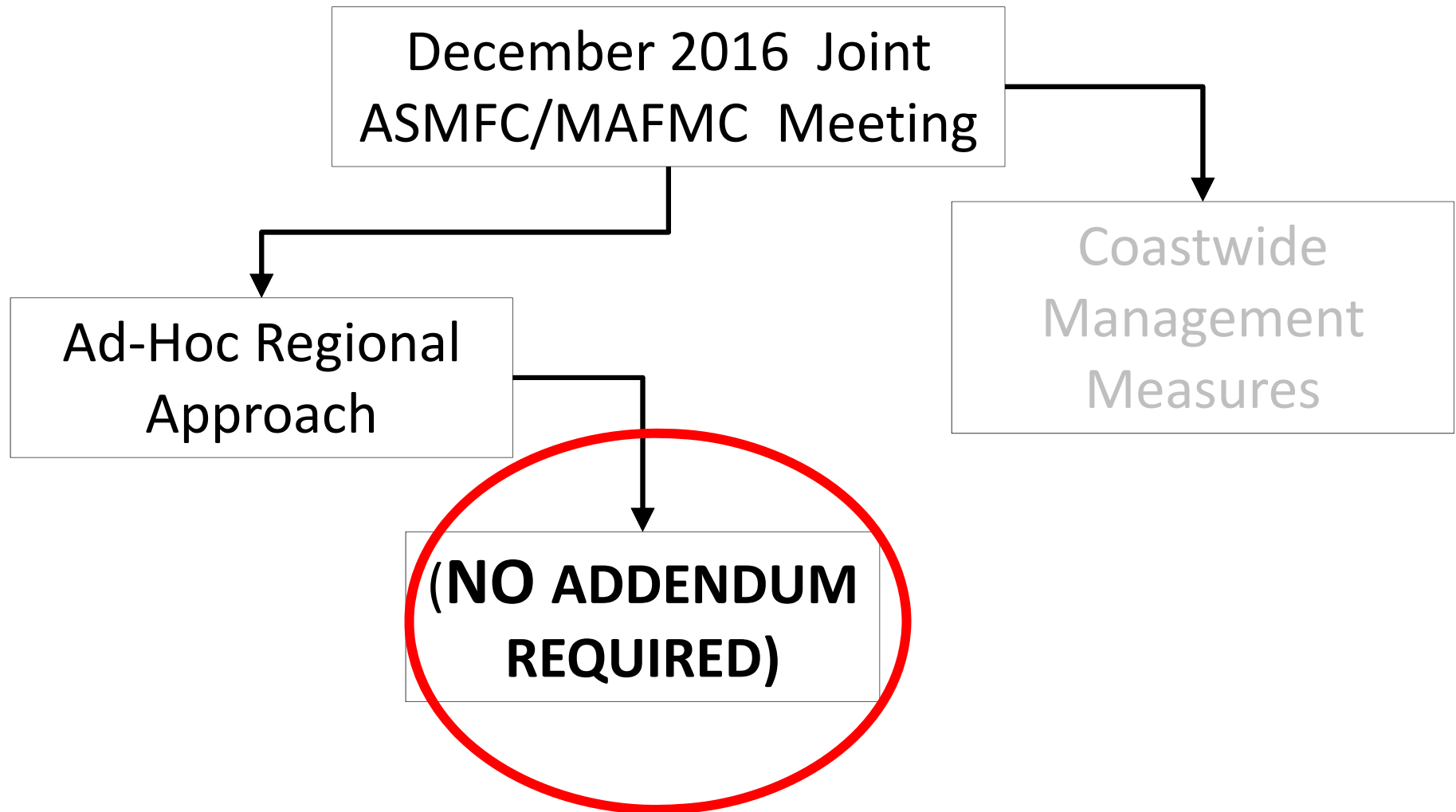
Annual Decision Tree



2017 Black Sea Bass Management



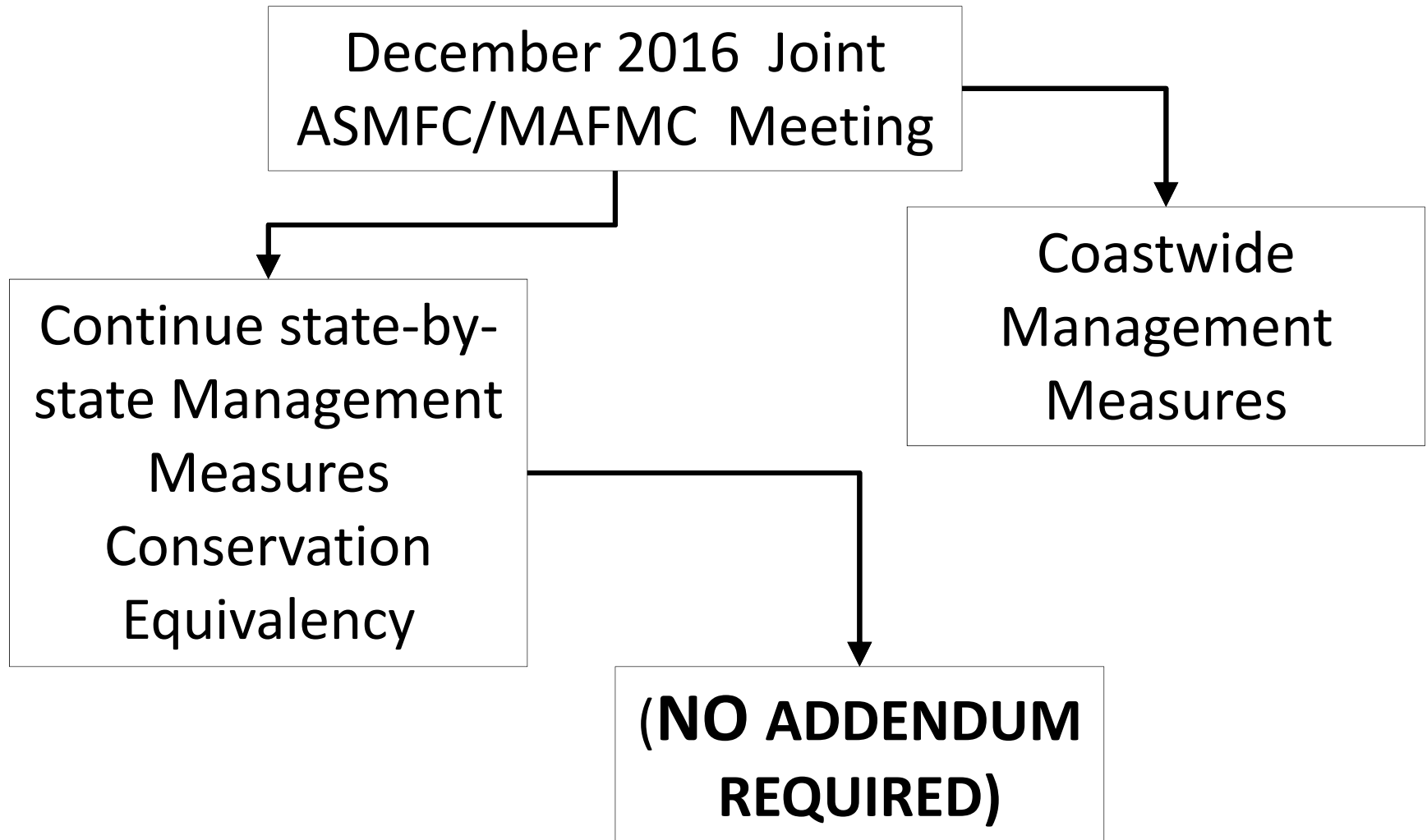
Annual Decision Tree



2017 Scup Management



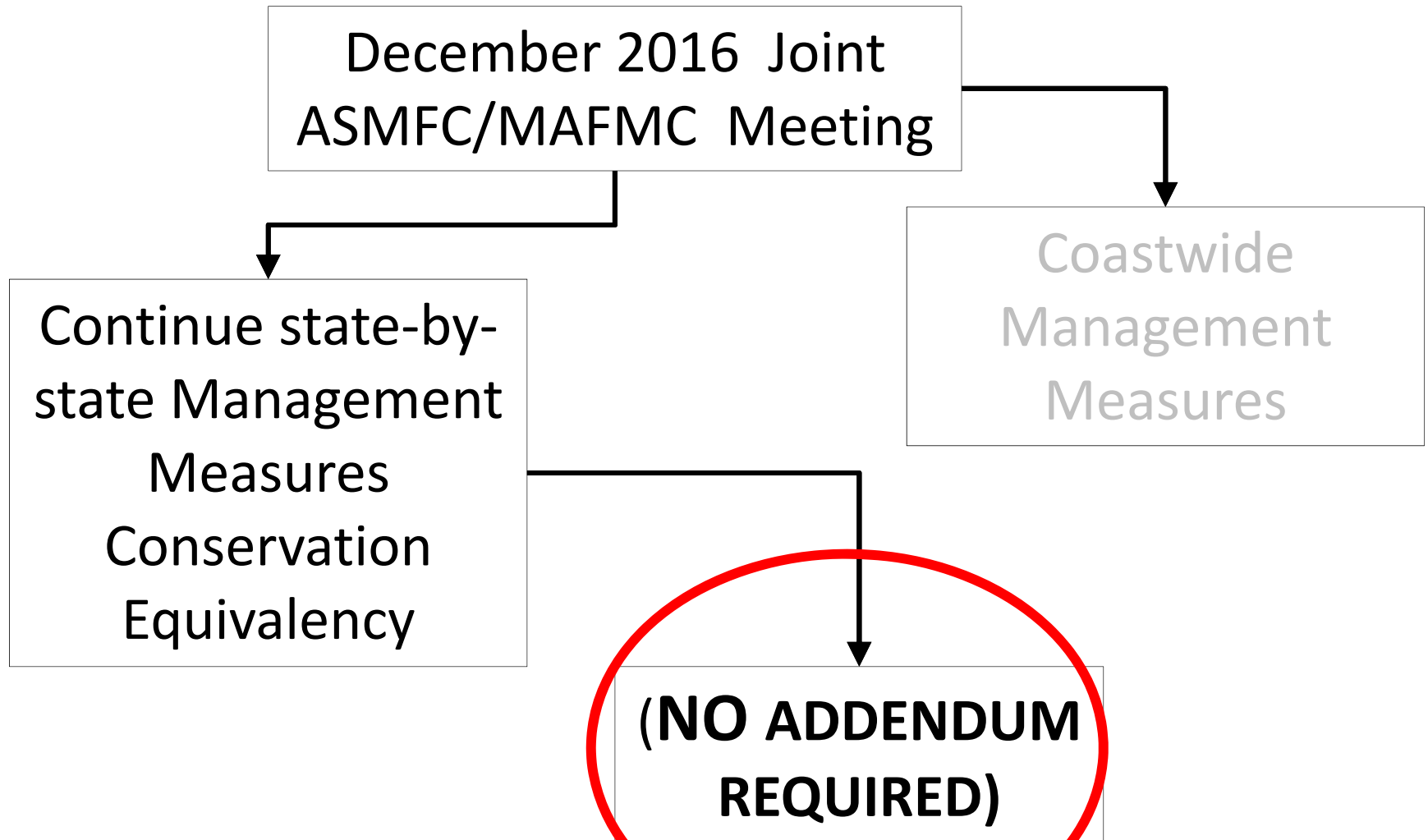
Annual Decision Tree



2017 Scup Management



Annual Decision Tree



Preliminary Analysis



Summer Flounder

- State-by-state Allocations (previous to '14)
 - Options 1 & 2
 - Options 3-4 (Regions: combined allocations)
- Regional Targets (Regions of '14-'16)
 - Options 5-6
- New Regions (RI-NJ)
 - Options 7 & 8

Summer Flounder- Option 1



STATE	2016 PROJECTED HARVEST	2017 ALLOCATION	Liberalization or Reduction (in Bold)
MA	63,834	68,102	7%
RI	92,309	70,579	-24%
CT	239,689	45,814	-81%
NY	812,624	217,928	-73%
NJ	656,373	484,146	-26%
DE	95,984	38,385	-60%
MD	19,263	37,147	93%
VA	89,359	206,784	131%
NC	13,542	69,341	412%

Summer Flounder - Option 2



		BASED ON ALLOCATION PROPORTION		BASED ON NEED PROPORTION		REDUCTIONS DECREASE ~10%	
STATE	2016 PROJ HARVEST	2017 TARGET	Redux	2017 TARGET	Redux	2017 TARGET	Redux
MA	63,834	63,834	0	63,834	0	63,834	0
RI	92,309	86,672	-6%	74,661	-19%	79,875	-13%
CT	239,689	56,261	-77%	82,231	-66%	70,388	-71%
NY	812,624	267,619	-67%	329,634	-59%	301,568	-63%
NJ	656,373	594,539	-9%	516,497	-21%	552,156	-16%
DE	95,984	47,137	-51%	49,204	-49%	48,241	-50%
MD	19,263	19,263	0	19,263	0	19,263	0
VA	89,359	89,359	0	89,359	0	89,359	0
NC	13,542	13,542	0	13,542	0	13,542	0

Summer Flounder- Option 3



STATE	2016 PROJECTED HARVEST	2017 ALLOCATION	Liberalization or Reduction (in Bold)
MA	63,834	68,102	7%
RI	92,309	70,579	-24%
CT			
NY			
NJ	1,708,687	747,889	-56%
DE			
MD			
VA	204,606	282,316	38%
NC	13,542	69,341	412%

Summer Flounder - Option 4



STATE	2016 PROJECTED HARVEST	2017 ALLOCATIONS	Liberalization or Reduction (in Bold)
MA	63,834	63,834	0
RI	92,309	82,460	-11%
CT			
NY			
NJ	1,708,687	873,784	-49%
DE			
MD			
VA	204,606	204,606	0
NC	13,542	13,542	0

Summer Flounder - Option 5



STATE	2016 PROJECTED HARVEST	2017 TARGET	Liberalization or Reduction (in Bold)
MA	63,834	37,946	-41%
RI	92,309	54,873	-41%
CT			
NY			
NJ	1,708,687	1,015,728	-41%
DE			
MD			
VA	204,606	121,628	-41%
NC	13,542	8,050	-41%

Summer Flounder - Option 6



STATE	2016 PROJECTED HARVEST	2017 TARGET	Liberalization or Reduction (in Bold)
MA	63,834	44,684	-30.0%
RI	92,309	53,348	-42.2%
CT			
NY			
NJ	1,708,687	987,491	-42.2%
DE			
MD			
VA	204,606	143,224	-30.0%
NC	13,542	9,480	-30.0%

Summer Flounder- Option 7



STATE	2016 PROJECTED HARVEST	2017 TARGET	Liberalization or Reduction (in Bold)
MA	63,834	63,834	0
RI			
CT			
NY			
NJ	1,781,926	956,244	-46%
DE			
MD			
VA	204,606	204,606	0
NC	13,542	13,542	0

Summer Flounder- Option 8



STATE	2016 PROJECTED HARVEST	2017 TARGET	Liberalization or Reduction (in Bold)
MA	63,834	44,684	-30.0%
RI			
CT			
NY			
NJ	1,781,926	1,040,838	-41.6%
DE			
MD			
VA	204,606	143,224	-30.0%
NC	13,542	9,480	-30.0%

Call Summary



Key Points:

- 30% reduction in the 2017 Summer Flounder RHL compared to the 2016.
 - Board & Council voted to reduce the 2017 RHL in response to findings of the 2016 Summer Flounder Stock Assessment Update in August 2016.
- Based on preliminary 2016 harvest data through wave 4, coastwide reduction of 41% for the 2017
- The group indicated that options 4 (Regional Allocations with ‘fish-sharing’) and option 6 (regional allocation with minimum 30% reduction) seem worth focusing on.

Call Summary Cont'd



Additional Comments:

- Concern that 'fish-sharing' can be arbitrary
- 'Guiding principle'- measures should achieve the needed reduction without being 'extreme' (super high size limit, low bag limit, and little-to-no season).
- Recent fishing performance should be taken into consideration.
 - underperformance of 2016 harvest targets in certain states to modify (down) their 30% minimum reductions.
- New Jersey-Delaware Bay specific management measures & 2016 performance .
 - 2016: during Wave 3 and 4, NJ's Delaware Bay fluke harvest was 0.9% of state's harvest, ~6,000 fish.

Additional Options (VA)



2 additional options

- 1. Freezing MA, MD, VA, NC at 2016 harvest levels and distributing additional fish proportionally across states.
- 2. 2017 Targets if:
 - A)** (MA, MD, VA, NC) do not liberalize
 - B)** States not projected to exceed 2016 allocation (RI & NJ) take a 2017 allocation based on 1998, and
 - C)** states projected to exceed 2016 allocation (CT, NY, & DE) take a reduction in 2017 proportional to projected 2016 overage

Things to keep in mind



- Preliminary harvest estimates & analysis - may change
- Tight timeframe for turnaround
- Addendum XXVII language on CE state-by-state allocations in 2017
- Accountability measures (Council/NOAA)
- IF addendum initiated...
 - Longer term planning (Comprehensive Amendment)
 - ‘Longer’ implementation timeframe (2-4 years)
 - Consider how reductions would be handled in future years
 - Account for data uncertainty



Questions?



2016 Black Sea Bass Benchmark Stock Assessment Update

Summer Flounder, Scup, Black Sea Bass Board
October 25, 2016

Work so far



- Data Workshop- June 2016
- Assessment Workshop- September 2016
- Multiple calls in-between
- Explored modeling techniques to get spatial and unique life history characteristics
- On schedule for completion in time for December 2016 Peer Review

Timetable moving forward



- Assessment Report: completed by early November 2016
- Peer Review: Nov 29th- December 2nd 2016
- **Won't be ready for joint ASMFC/MAFMC Meeting in December 2016 (Baltimore, MD)***
- MAFMC SSC will review Peer Review & Assessment Report in January 2016
- **Joint ASMFC/MAFMC Meeting to consider Assessment and Management Action February 14th-16th 2016 (Kitty Hawk, NC)**



Questions?