



Summer Flounder Commercial Issues Amendment: Draft Public Hearing Document Review



April 30, 2018
Arlington, VA

Today's Objectives

- Review and approve draft public hearing document (joint action)
- Review and approve draft amendment for public hearings (Board only)

Council & Commission Documents

- Joint public hearing document
- Commission amendment document (review and approve today)
- Council amendment document = Draft EIS (additional analysis needed; tentative June approval)

August & December 2017

- Council and Board approved range of alternatives for:
 1. Federal permit requalification criteria
 2. Commercial allocation
 3. Landings flexibility framework provisions

Plus: FMP Goals and Objectives revisions

Draft Public Hearing Document Content

1. Contents
2. Comment instructions/hearing schedule (TBD)
3. Introduction and purpose
4. Proposed FMP objectives revisions
5. Federal permit alternatives & impacts
6. Commercial allocation alternatives & impacts
7. Landings flexibility framework provisions alternatives & impacts

Draft Public Hearing Document Content

- Description of alternatives and summary of impacts
- **More detailed information to be available in DEIS**
 - Current draft in supplemental materials
 - To be finalized prior to hearings
- PHD impacts mostly qualitative, high level

PHD Approval

- Should this document go to public hearings?
- Does the document appropriately communicate the management options and their impacts to the public?

FMP GOALS AND OBJECTIVES



FMP Goals and Objectives

- Proposed revisions approved for public hearings in December 2017
- Not “alternatives,” but described in section 4 of PHD
- Notes that Council and Board are seeking comments on proposed revisions

FEDERAL MORATORIUM PERMIT REQUALIFICATION ALTERNATIVES



Federal Permit Requalification

- **Alt. 1A: No action/*status quo***
 - Am. 2 (1993) criteria: 1/26/85-1/26/90 qualifying
 - 941 currently eligible moratorium rights
- **Alt. 1B: Implement requalifying criteria**
 - 7 sub-alternatives (next slide)

Federal Permit Requalification

Sub-Option	Time Period	Qualification Threshold	# requalifying (%)	# eliminated (%)
1B-1	August 1, 2009-July 31, 2014 (5 yrs)	≥1,000 pounds cumulative	425 (45%)	516 (55%)
1B-2	August 1, 2009-July 31, 2014 (5 yrs)	≥1 lb in any one year	493 (52%)	448 (48%)
1B-3	August 1, 2004-July 31, 2014 (10 yrs)	≥1,000 pounds cumulative	552 (59%)	389 (41%)
1B-4	August 1, 2004-July 31, 2014 (10 yrs)	≥1 lb in any one year	635 (67%)	306 (33%)
1B-5	August 1, 1999-July 31, 2014 (15 yrs)	≥1,000 pounds cumulative	646 (69%)	295 (31%)
1B-6	August 1, 1994-July 31, 2014 (20 yrs)	≥1 lb in 20% of years in time period (4 years)	670 (71%)	271 (29%)
1B-7	August 1, 1994-July 31, 2014 (20 yrs)	≥1,000 pounds cumulative	708 (75%)	233 (25%)

1A/1B Impacts (section 5.2)

- Depend on degree of possible latent effort re-entry to fishery (difficult to predict; depends on many management and economic factors)
- Overall effort remains constrained by annual quotas; participant access modified (may have little effect depending on activity of eliminated permits)
- Possible direct economic impacts on eliminated and remaining permit holders; long-term impacts of preventing re-entry of latent effort (highly uncertain)

1B Impacts (section 5.2.2)

- Magnitude of impacts depends on number of permits eliminated and degree of recent activity
 - Based on analysis, likely small or negligible for current options given low associated recent landings

1B Impacts

Sub-Option	Time Period	Qualification Threshold	Landings 8/1/09-7/31/14 (%)	Ex-vessel value 8/1/09-7/31/14 (%)
1B-1	August 1, 2009-July 31, 2014 (5 yrs)	≥1,000 pounds cumulative	24,529 (0.04%)	\$54,395 (0.05%)
1B-2	August 1, 2009-July 31, 2014 (5 yrs)	≥1 lb in any one year	0 (0%)	\$0 (0%)
1B-3	August 1, 2004-July 31, 2014 (10 yrs)	≥1,000 pounds cumulative	5,713 (0.01%)	\$10,980 (0.01%)
1B-4	August 1, 2004-July 31, 2014 (10 yrs)	≥1 lb in any one year	0 (0%)	\$0 (0%)
1B-5	August 1, 1999-July 31, 2014 (15 yrs)	≥1,000 pounds cumulative	2,896 (0.01%)	\$7,016 (0.01%)
1B-6	August 1, 1994-July 31, 2014 (20 yrs)	≥1 lb in 20% of years in time period (4 years)	181,302 (0.32%)	\$326,034 (0.28%)
1B-7	August 1, 1994-July 31, 2014 (20 yrs)	≥1,000 pounds cumulative	2,414 (0%)	\$5,619 (0%)

COMMERCIAL ALLOCATION ALTERNATIVES



2. Commercial Allocation

2A No action/*status quo* (1980-1989 landings basis)

2B Revised state allocations, adjusted based on regional relative exploitable biomass using NEFSC trawl survey data

- *2B-1: Northern region % biomass change applied as % change in Northern allocation*
- *2B-2: Regional shift in biomass applied as shift in allocation to North (relative to coastwide allocation)*

2C State allocations revised in years coastwide quota exceeds trigger ("additional" quota above trigger allocated differently)

- *2C-1: 8.40 mil lb trigger (5-yr avg quota)*
- *2C-2: 10.71 mil lb trigger (10-yr avg quota)*

2D "Scup quota model" for summer flounder (two coastwide winter periods and state-by-state summer period)

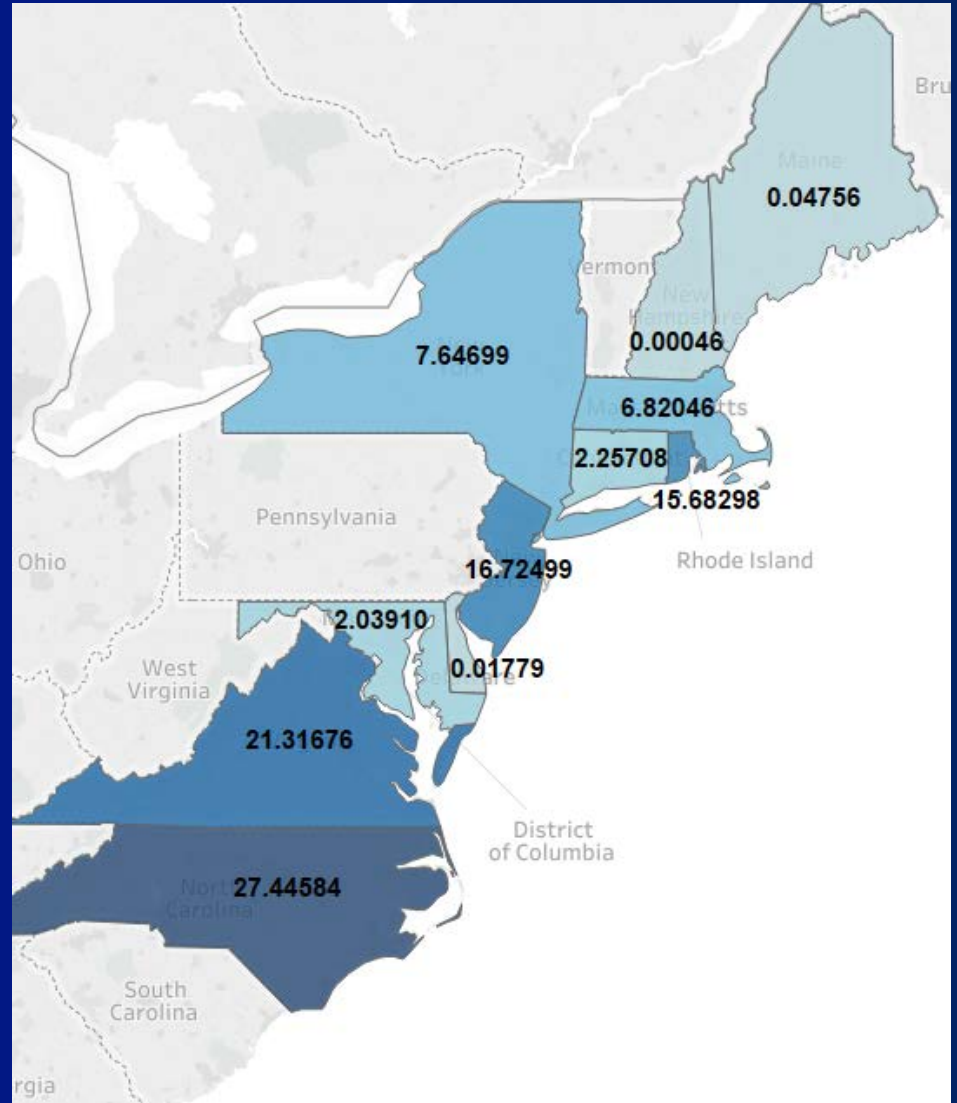
- *2D-1: Exempt Maryland; MD retains current share year-round*
- *2D-2: Do not exempt Maryland*

Note on Precision

- Current state allocations go to 5 decimal places
 - Probably due to very small allocation states, i.e., NH 0.00046%
- State allocation alts. maintain 5 decimal places, unless directed otherwise by Council/Board

2A. No Action/Status Quo

- Amendment 2 (1993)
- 1980-1989 base years



2B. State Allocations Adjusted for Recent Biomass Distribution

- Adjust state allocations using regional shift in relative exploitable biomass estimated from NEFSC trawl survey data
 - 2 regions: North and South, divided at approximately Hudson Canyon (NY and North; NJ and south)
 - 1980-1989 (67% in N) vs. 2007-2016 (80% in N)

2B Configuration

- Two sub-alternatives with different approaches to translating into allocation change
- Based on working group recommendation from Feb. 2018 (see memo in briefing book)
 - **2B-1:** Calculate biomass regional change as a *percent change* in North (+19%); apply as *percent change* in allocation relative to Northern region starting allocation
 - **2B-2:** Calculate biomass regional change as shift relative to coast (13%), apply as 13% shift in regional allocation

2B-1

State	Current state alloc. (%)	Revised state alloc. under Alt 2B-1 (%)	Percent change relative to existing state allocation	Change in share of total coastwide quota
ME	0.04756	0.05660	+19%	+0.00904
NH	0.00046	0.00055	+19%	+0.00009
MA	6.82046	8.11635	+19%	+1.29589
RI	15.68298	18.66275	+19%	+2.97977
CT	2.25708	2.68593	+19%	+0.42885
NY	7.64699	9.09992	+19%	+1.45293
<i>N Region</i>	<i>32.45553</i>	<i>38.62210</i>	<i>+19%</i>	<i>+6%</i>
NJ	16.72499	15.19806	-9%	-1.52693
DE	0.01779	0.01617	-9%	-0.00162
MD	2.0391	1.85294	-9%	-0.18616
VA	21.31676	19.37062	-9%	-1.94614
NC	27.44584	24.94014	-9%	-2.50570
<i>S Region</i>	<i>67.54448</i>	<i>61.37793</i>	<i>-9%</i>	<i>-6%</i>

Change in share of coastwide quota ranges from +3% to -2.5%

2B-2

State	Current state alloc. (%)	Revised state alloc. under Alt 2B-2 (%)	Percent change relative to existing state allocation	Change in share of total coastwide quota
ME	0.04756	0.06661	+40%	+0.01905
NH	0.00046	0.00064	+40%	+0.00018
MA	6.82046	9.55238	+40%	+2.73192
RI	15.68298	21.96477	+40%	+6.28179
CT	2.25708	3.16115	+40%	+0.90407
NY	7.64699	10.70998	+40%	+3.06299
<i>N Region</i>	<i>32.45553</i>	<i>45.45553</i>	<i>+40%</i>	<i>+13%</i>
NJ	16.72499	13.50600	-19%	-3.21899
DE	0.01779	0.01437	-19%	-0.00342
MD	2.0391	1.64664	-19%	-0.39246
VA	21.31676	17.21401	-19%	-4.10275
NC	27.44584	22.16345	-19%	-5.28239
<i>S Region</i>	<i>67.54448</i>	<i>54.54447</i>	<i>-19%</i>	<i>-13%</i>

Change in share of coastwide quota ranges from +6.3% to -5.3%

2B Impacts (section 6.2.2)

- Hearing document summarizes general expected impacts of shifting landings/revenues by region and state
- Economic impacts vary by sub-alternative and by state (consider characteristics of each state's fishery)
- Impacts also depend on state management response
- More details will be in DEIS

2C. Revised State Allocations Above Quota Trigger

- Annual coastwide quota-based trigger for modifying state allocations
- *Status quo* allocations unless annual coastwide quota exceeds trigger
 - **2C-1**: 8.40 mil lb (5 yr quota avg)
 - **2C-2**: 10.71 mil lb (10 yr quota avg)

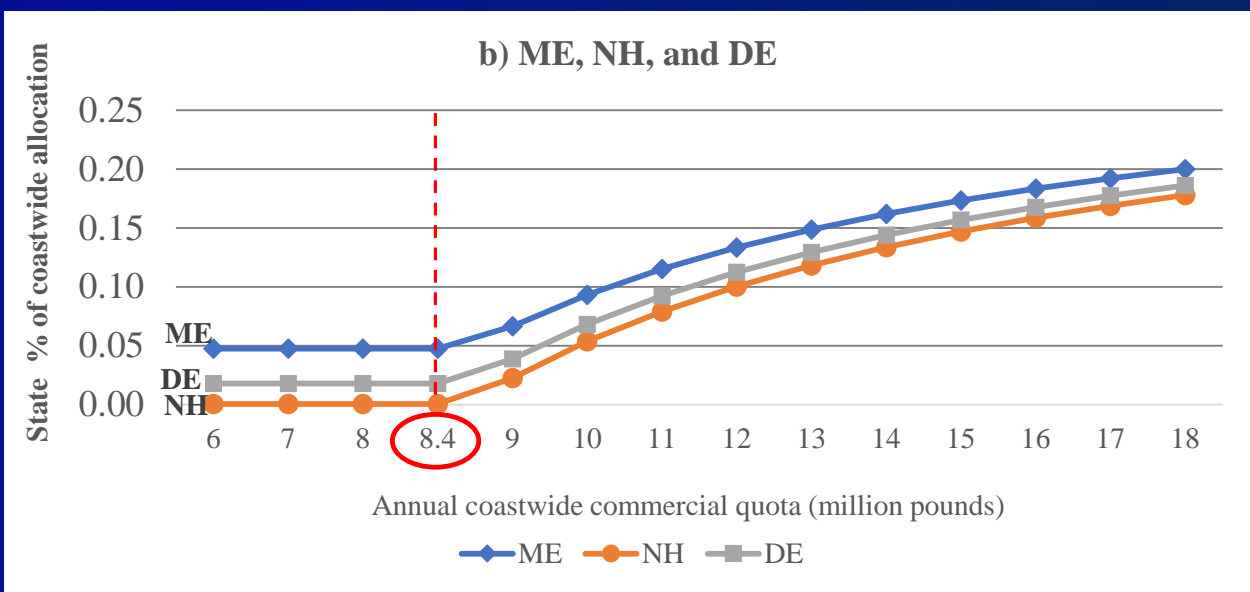
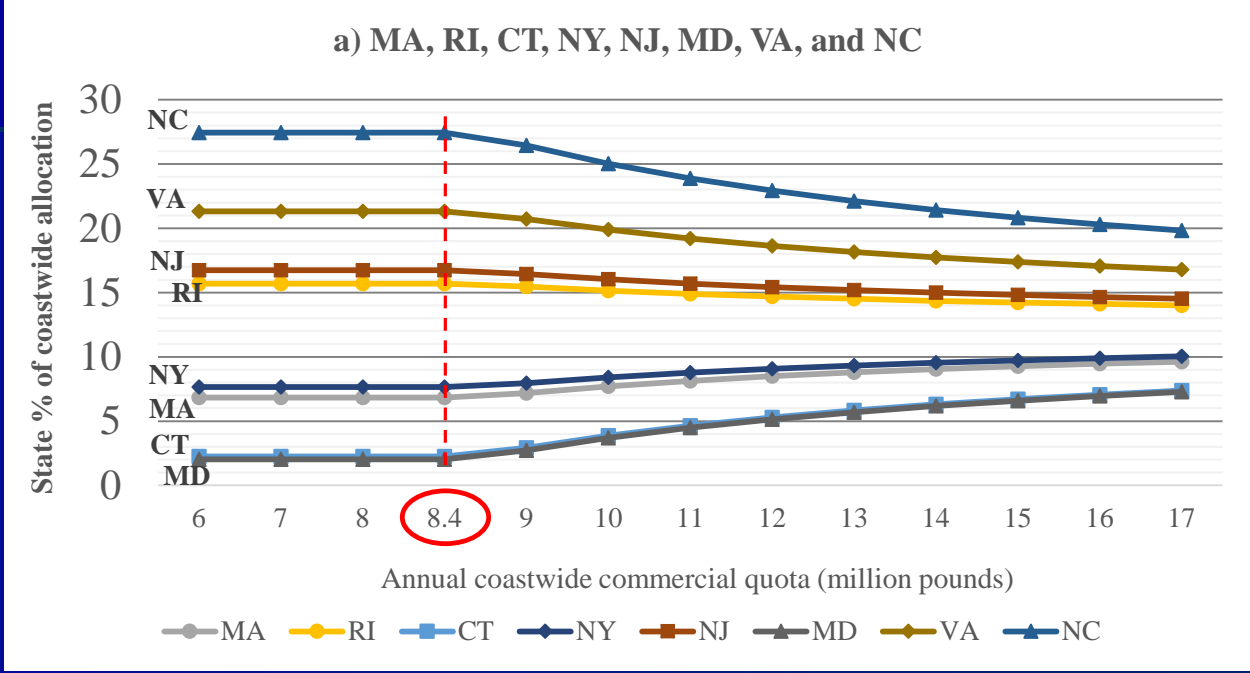
2C. Revised State Allocations Above Quota Trigger

- In years where trigger exceeded:
 - Base quota up to trigger amount distributed based on *status quo* allocations
 - Additional quota beyond trigger distributed by equal shares to each state
 - ME, NH, DE split 1% of coastwide quota

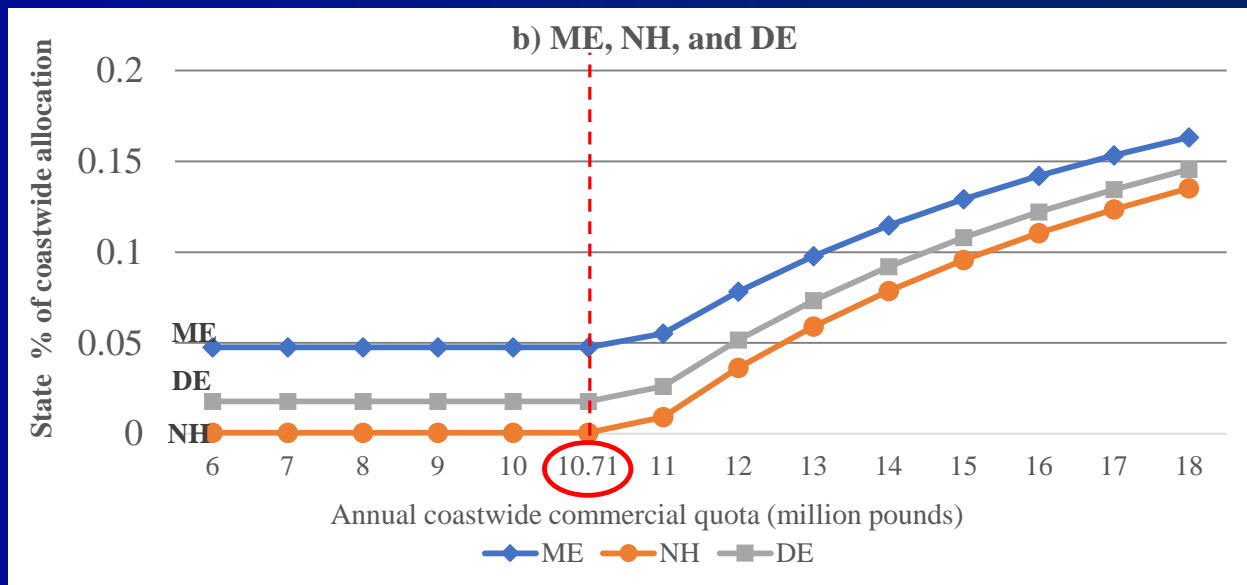
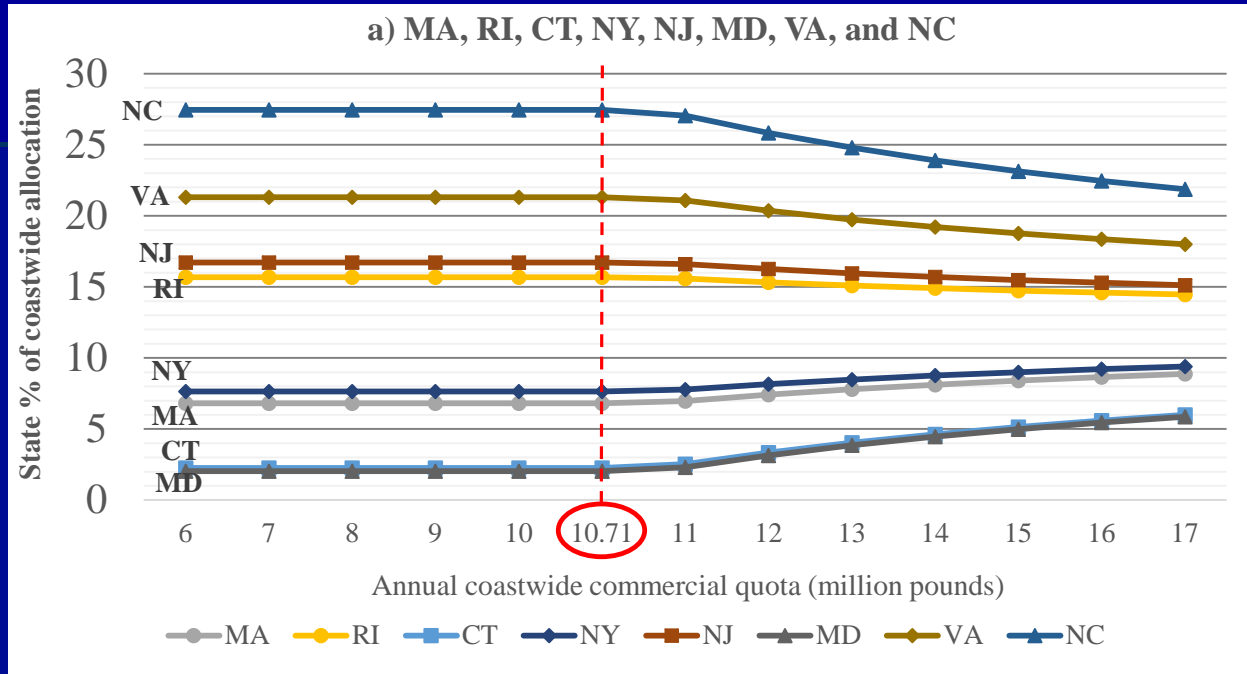
2C. Revised State Allocations Above Quota Trigger

State	Allocation (%) of baseline quota <u>up to and including</u> [8.40 or 10.71] million lb	Allocation (%) of <u>additional</u> quota beyond [8.40 or 10.71] million lb	Total state allocation
ME	0.04756	0.333	Variable annually, depending on annual quota and "additional" amount to be distributed
NH	0.00046	0.333	
MA	6.82046	12.375	
RI	15.68298	12.375	
CT	2.25708	12.375	
NY	7.64699	12.375	
NJ	16.72499	12.375	
DE	0.01779	0.333	
MD	2.03910	12.375	
VA	21.31676	12.375	
NC	27.44584	12.375	
Total	100	100	100

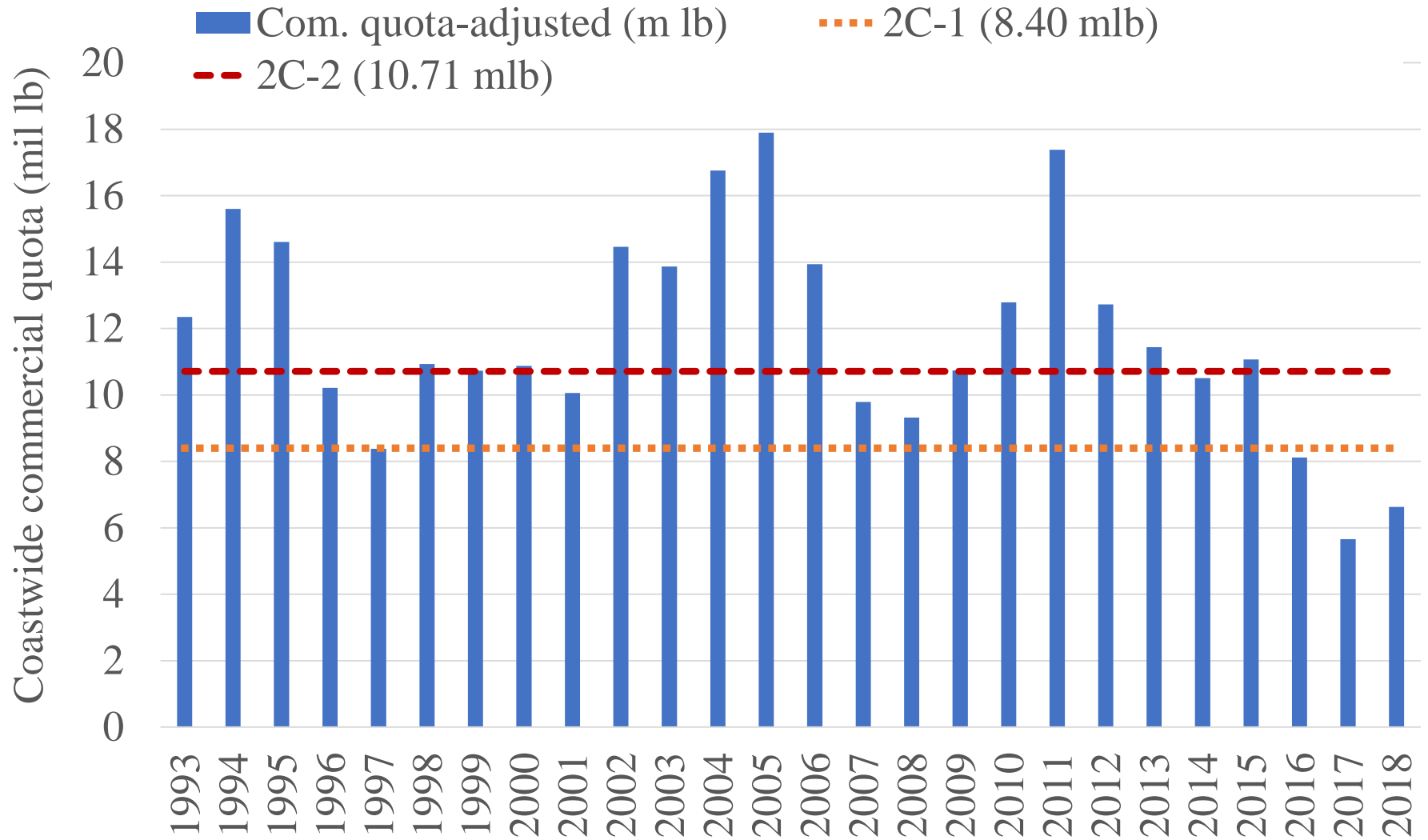
2C-1



2C-2



2C Impacts



2C Impacts

	Alternative 2C-1		Alternative 2C-2	
Trigger	8.40 million lb		10.71 million lb	
Freq. of 1993-2018 quotas <u>at or below</u>	4 of 26		9 of 26	
Freq. of 1993-2018 quotas <u>exceeding</u> trigger	22 of 26		17 of 26	
State allocation under 1993-2018 high/low quotas	Alloc. % under low quota (5.66 m. lb) = <i>Status quo</i>	Alloc. % under high quota (17.9 m. lb) = revised	Alloc. % under low quota (5.66 m. lb) = <i>Status quo</i>	Alloc. % under high quota (17.9 m. lb) = revised
ME	0.04756	0.19923	0.04756	0.16235
NH	0.00046	0.17712	0.00046	0.13417
MA	6.82046	9.76840	6.82046	9.05159
RI	15.68298	13.92735	15.68298	14.35424
CT	2.25708	7.62693	2.25708	6.32121
NY	7.64699	10.15627	7.64699	9.54612
NJ	16.72499	14.41634	16.72499	14.97770
DE	0.01779	0.18526	0.01779	0.14453
MD	2.0391	7.52463	2.0391	6.19078
VA	21.31676	16.57113	21.31676	17.72507
NC	27.44584	19.44735	27.44584	21.39225

2D. "Scup Model"

Quota Period	Dates	Management
Winter I	January 1-April 30	Coastwide quota and measures
Summer	May 1-October 31*	State-specific quotas and measures
Winter II	November 1-December 31	Coastwide quota and measures

*Per Council/Board guidance, public comments requested on quota period dates, especially October

2D. "Scup Model"

- Winter coastwide possession limits, closure triggers, rollover provisions:
 - Recommended/reviewed by Monitoring Committee annually
 - Adopted by Council/Board during specifications

2D. "Scup Model"

- Sub-Alternatives:
 - **2D-1: Exemption for Maryland** due to IFQ management system. MD retains current 2.03910% share of coastwide quota.
 - **2D-2: No exemption for Maryland**

2D-1

Allocations based on 1997-2016 landings, excluding MD

Quota Period	Dates	Management	Alloc.
Winter I	Jan 1- Apr 30	Coastwide quota and measures	55.26%
Summer	May 1- Oct 31	State-specific quotas and measures	27.65%
Winter II	Nov 1- Dec 31	Coastwide quota and measures	17.10%

Summer Shares	
ME	0.015%
NH	0.000%
MA	19.332%
RI	22.476%
CT	3.566%
NY	18.553%
NJ	29.667%
DE	0.045%
MD	-- ^a
VA	5.648%
NC	0.699%

^a Maryland receives annual 2.03910%; no specific summer allocation

2D-2

Allocations based on 1997-2016 landings (all states ME-NC)

Quota Period	Dates	Management	Alloc.
Winter I	Jan 1- Apr 30	Coastwide quota and measures	54.68%
Summer	May 1- Oct 31	State-specific quotas and measures	28.28%
Winter II	Nov 1- Dec 31	Coastwide quota and measures	17.04%

Summer Shares	
ME	0.015%
NH	0.000%
MA	18.525%
RI	21.538%
CT	3.417%
NY	17.779%
NJ	28.429%
DE	0.043%
MD	4.171%
VA	5.412%
NC	0.670%

2D Impacts

- Introduction of coastwide management periods results in highly uncertain impacts
- Impacts depend on participation, specific measures, degree of latent effort re-entry, location of landings in winter, etc.
- May be difficult to develop acceptable coastwide possession limits
- Council/Board concerns re: derby fishing raised in document, seeking comments

LANDINGS FLEXIBILITY FRAMEWORK PROVISION ALTERNATIVES



3. Landings Flexibility

- **3A: No action/***status quo*
- **3B: Add commercial landings flexibility as a frameworkable item in Council FMP**
 - Details determined at time of future framework
 - Could include actions for multiple possession limit provisions if feasible
 - Separate analysis and public comment process for future framework actions

3A/3B Impacts

- Primarily administrative = no direct impacts expected
- Impacts of future framework actions analyzed through separate process
- Impacts depend on details of future action
- Note that future actions may have significant impacts and may require an EIS (may not necessarily save time)

Next Steps

- Work with states to schedule public hearings for July/August
- DEIS approval at June Council meeting
- Notice hearings (23 days in advance)
- Final action in December 2018



Strategic Plan for Reforming Black Sea Bass Recreational Management

Joint ASMFC/MAFMC Spring Meeting

Arlington, VA

April 30, 2018

Presentation Outline



1. Introduction
2. Timeline
3. Major Tracks
4. Next Steps
5. Discussion and Guidance
6. Action Items

Introduction

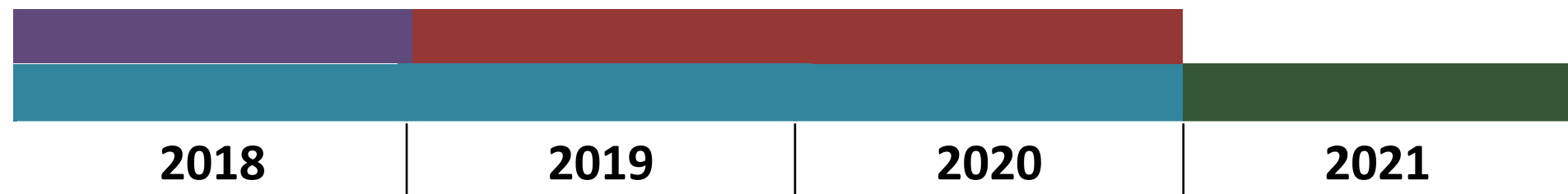


- Recreational management is a work in progress
- Draft document developed to initiate discussion of strategy for reforming management program
 - **Goal:** Improve the management program for recreational black sea bass by providing reasonable and equitable access to the resource, commensurate with stock status and distribution, and bolstering accountability.
 - **General Strategy:** Pursue a comprehensive, iterative approach - developed and implemented via an interim program for 2018-2020, paving the way for fully amended program in 2021.

Timeline



- **2018**: Interim Program development and adoption
- **2019-2020**: Interim Program implementation
- **2018-2020**: Full Program development and adoption
- **2021**: Full Program implementation



Major Tracks



1. Stock Status

- SSB well above target; high biomass despite ACL/RHL overages; distinct sub-spatial units

2. Catch & Effort Data

- Need for improved discard data; appropriate use of MRIP data; opportunities for self-reported data

3. Management

- Manage catch versus harvest; F-based approach; multi-year specification and evaluation; equity in access

4. Stakeholder Engagement

- Participation in process; reporting and stewardship

Next Steps (Short Term)



- **Today:** 1) Initial feedback from Board and Council on general aspects of proposed strategy, and 2) consent to move forward with further development of strategy
- **May:** Solicit additional input from Board & Council
- **Late Spring/Early Summer:** 1) Leadership, staff, and GARFO identify/clarify tasks, actions, and timeframes needed to achieve key elements of strategy, and 2) working group is convened to develop initial set of options for 2019-2020 [interim] management program
- **August:** Board & Council 1) establish ABC for 2019 (& 2020?), 2) give full consideration to proposed strategy, and 3) review initial options for 2019-2020 management program
- **October:** Draft addendum, addressing 2019-2020 management program is considered for public comment
- **December:** Draft addendum is considered for final approval

Discussion & Guidance



- Questions?
- **Is there support for moving forward, in short term, as proposed (i.e., next steps)?**
- Discussion & Guidance:
 - Does the strategy serve as a useful and appropriate platform for guiding reform of the management program?
 - Does it capture the most important elements?
Any key issues to be added/modified/removed?

Action Items



- Prioritize operational update for late 2018/early 2019



Summer Flounder, Scup, Black Sea Bass Recreational Management Framework/Addendum



Atlantic States Marine Fisheries
Commission and Mid-Atlantic Fishery
Management Council Joint Meeting

April 30, 2018

Meeting Objective



- Consider approval of management alternatives for inclusion in Draft Framework/Addendum

Framework/Addendum Topics



- Black sea bass conservation equivalency
- Block Island Sound transit provisions
- Slot limits

Additional Issue



- Evaluation and modification of recreational measures based on ACL (Addendum XXX)

Outline



- Black sea conservation equivalency
 - FMAT and Committee recommendations
- Block Island Sound transit provisions
 - FMAT and Committee recommendations
- Slot limits
 - FMAT and Committee recommendations
- ACL issue
 - FMAT and Committee discussion

Conservation Equivalency



- Draft alternatives
 - 1.A: No action
 - 1.B: Update the FMPs to allow conservation equivalency for black sea bass
 - 1.B.i: Use the current summer flounder conservation equivalency process
 - 1.B.ii: Use a similar process as summer flounder, with one or more of the following modifications:
 - Conservation equivalency rollover (when appropriate)
 - Joint Council/Board determination of state/regional allocations of RHL
 - Option to manage to the ACL rather than the RHL

Summer Flounder Process



- Dec – Council/Board: Coastwide measures or conservation equivalency?
 - If conservation equivalency:
 - Non-preferred coastwide measures
 - Precautionary default measures
- Feb – states/regions submit proposals, TC reviews, Board considers for approval
- States/regions without approved proposals must implement precautionary default
- March – ASMFC sends letter to NMFS certifying state/regional measures will collectively constrain harvest to the RHL
- NMFS waives federal waters measures

FMAT Recommendations



- Focus on updating FMPs to allow conservation equivalency in a future year
- Logistically complicated to use in 2019
- Wait for new MRIP time series before considering new allocation schemes

Committee/Board Subgroup



- Support for streamlining the conservation equivalency process
- Joint decisions on RHL allocations – concerns about efficiency and balance of representation among states
- Keep option for use in 2019 on the table, but concerns about feasibility

Block Island Sound Transit



- Draft alternatives
 - 2.A: No action (no transit provisions)
 - 2.B: Block Island Sound transit provisions
 - Which vessels?
 - Recreational only
 - Commercial and recreational
 - Which measures?
 - Season
 - Bag
 - Size

FMAT Recommendations



- Summer flounder, scup and black sea bass only
- Recreational fisheries only
- Only situations where federal waters are closed and state waters are open

Committee/Board Subgroup



Also consider:

- Commercial fisheries
- Recreational minimum fish size and possession limit differences between state and federal waters

Slot Limits



- Council-only action – FMP does not allow maximum size
- **Draft alternatives**
 - **3.A No action**
 - **3.B Update FMP to allow maximum size**
 - Would allow for regular slot limits, split slot limits, trophy fish

FMAT Recommendations



- All three species
- Use in 2019 may require backup measures
- Monitoring Committee analysis of specific slot limits

Committee/Board Subgroup



- Concern about black sea bass barotrauma
- Summer flounder stock status may necessitate a very narrow slot limit
- May want to consider using in 2019, but concerns about timing

Discussion



Modifications needed to alternatives?

1: black sea bass conservation equivalency

- 1.A: No action
- 1.B: Update the FMPs to allow conservation equivalency for black sea bass
 - 1.B.i: use current summer flounder conservation equivalency process
 - 1.B.ii: use a similar process as summer flounder, with one or more of the following modifications:
 - Conservation equivalency rollover
 - Joint Council and Board determination of state/regional allocations of RHL
 - Option to manage to the ACL rather than the RHL

Discussion (cont'd)



Modifications needed to alternatives?

2: Block Island Sound transit provisions

- 2.A: No action
- 2.B: Block Island Sound transit provisions
 - Which vessels? Recreational only or commercial and recreational
 - Which measures? Bag, size, and/or season

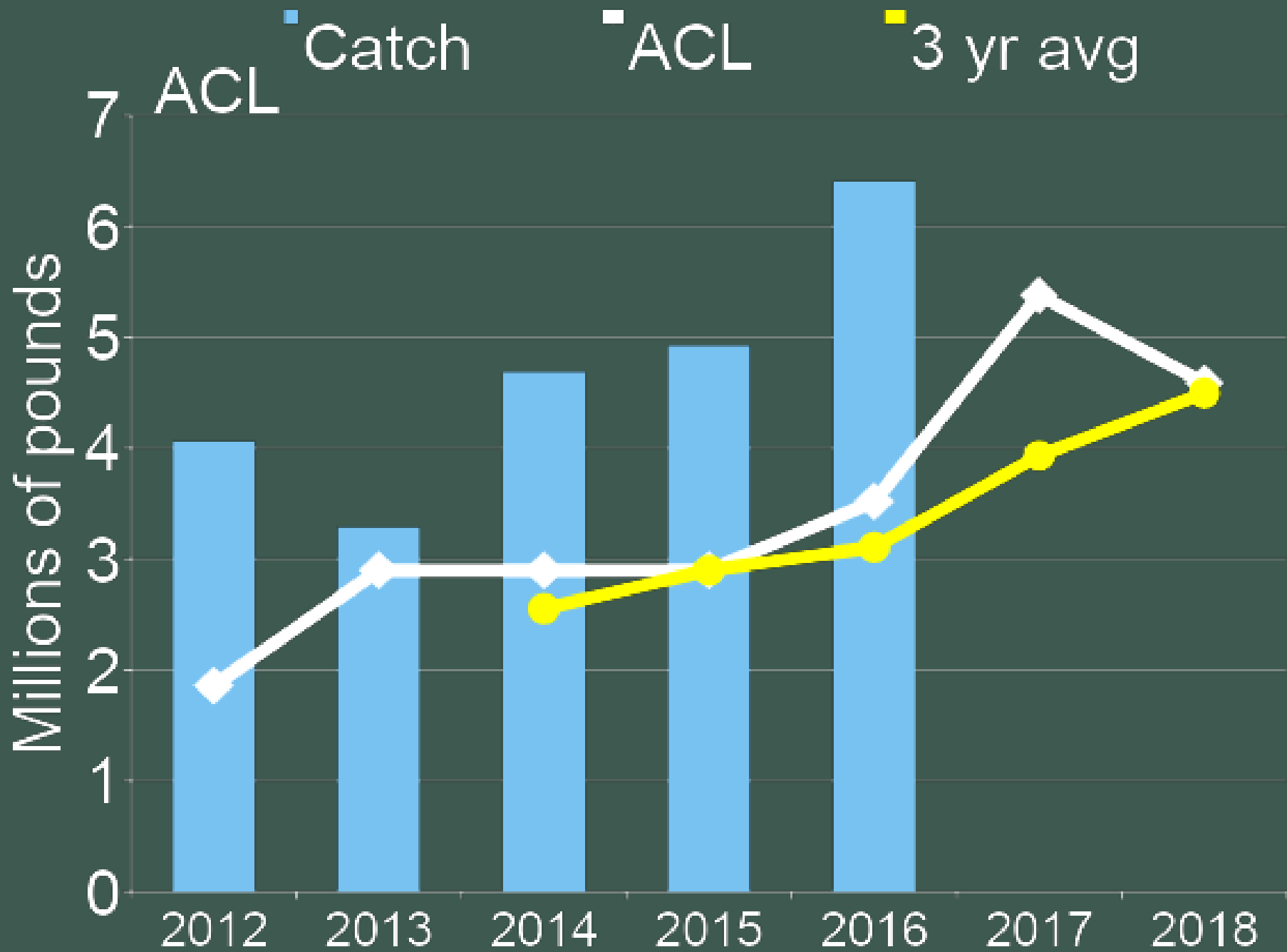
3: Recreational slot limits

- 3.A: No action
- 3.B: Modify Council FMP to allow use of a maximum size limit

ACL Issue – Addendum XXX



- Proposes evaluating fishery performance against ACL rather than RHL
- Measures would be specified based on year 1 projected catch to achieve the year 2 ACL
- Thereafter, fishery performance would be evaluated based on ACL
- If coastwide ACL is exceeded, catch (in the single year) would be compared to 3 year moving ACL average



ACL Issue – Addendum XXX



- States would need to demonstrate significant improvements by 2020 in:
 - Biological sampling (length and weight)
 - Reduction in dockside MRIP refusal rates
 - Discard composition information (i.e. reason, length)
 - Reduction in discarding relative to 2010-2015
 - Improved compliance with management measures

FMAT Discussion



- Depending on the details, FMP and regulation changes may not be needed
- Regs already require constraining to ACL, not RHL (except summer flounder conservation equivalency)
- FMP requires constraining catch to a single year ACL
- Timing of data availability a concern
- Further discussion by MC/TC warranted

Committee/Board Discussion



- Different impacts for northern versus southern states, given regional differences in the availability and size distribution of black sea bass
- Concerns with accuracy and precision of data & challenges with timing of the current process would be exacerbated if ACL were used
- Interest in multi-year approaches to management

Discussion



- Include ACL issue in FW/Addendum or address through other process?
- If yes:
 - What is the intent?
 - Measures aim to achieve RHL or ACL?
 - Which years in 3 year moving average?
 - Black sea bass only?

Next Steps



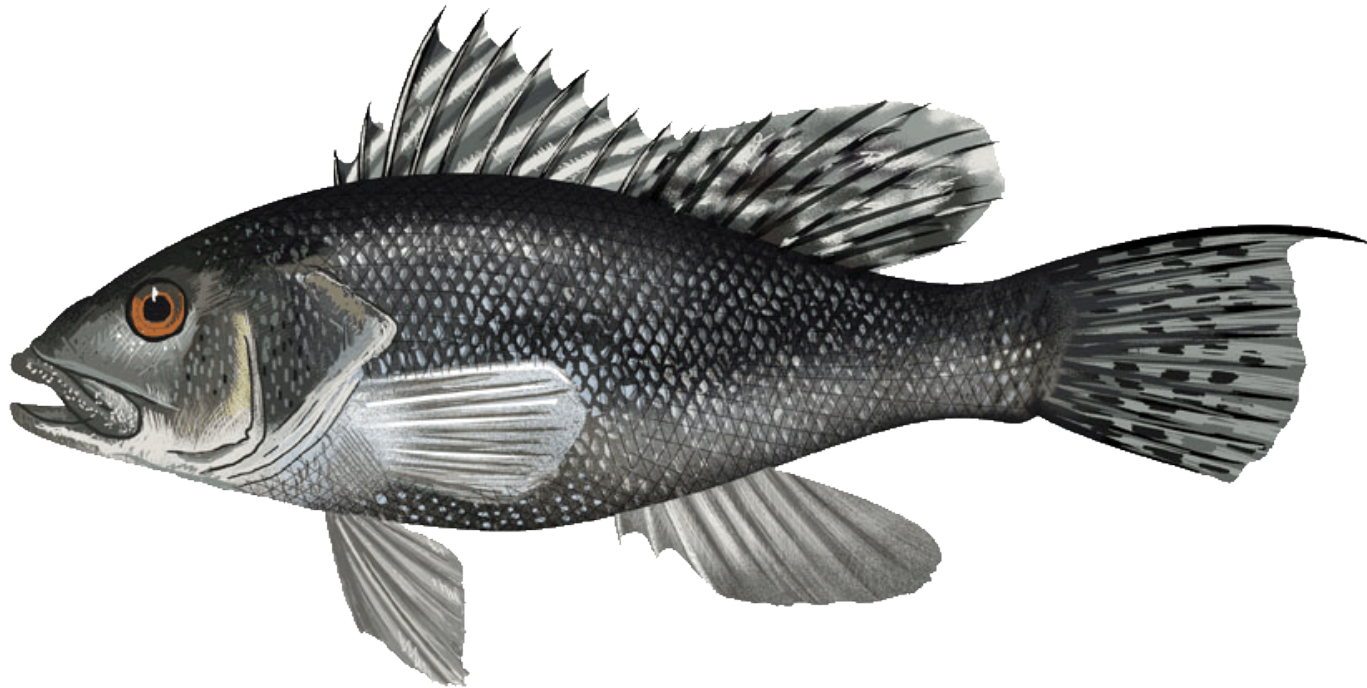
- **TODAY** – Approve Draft Alternatives
- **June/July** – AP & Monitoring Committee meetings
- **August Joint Meeting** – Approve Public Hearing Document/Draft Addendum for Public Comment
- **Fall** – Public Hearings (ASMFC)
- **Fall** – AP and Monitoring Committee meetings (if necessary)
- **December Joint Meeting** – Final action

Questions/Discussion



- Include ACL issue in FW/Addendum or address through other process?
- Suggested changes to the alternatives
- Additional alternatives to include

QUESTIONS?





February 2018 Black Sea Bass Recreational Fishery: Preliminary Harvest Estimates

Joint ASMFC/MAFMC Spring Meeting

Arlington, VA

April 30, 2018

Background



- In October 2017, Board and Council approved like motions to open a black sea bass recreational fishery for February 2018 with a 15 fish possession limit and 12.5 inch minimum size.
- 100,000 pounds allowed, allocated to states based on average wave 1 harvest proportions
- Only Virginia and North Carolina opted to participate in fishery

Background



Table 1. Allocation of the 100,000 pounds for February fishery

State	Proportion of Wave 1 Harvest	Allocation of Wave 1 100,000 pounds	
RI	0.29%	288	
CT	0.06%	57	
NY	9.41%	9,410	
NJ	82.85%	82,850	
DE	1.30%	1,297	
MD	0.54%	541	
VA	5.50%	5,496	Total: 5,558 lbs
NC	0.06%	62	
Total	100.00%	100,000	

Preliminary Harvest Estimates



Table 1. VA and NC's primary estimates as of April 30, 2018

State	Allocation of Wave 1 100,000 pounds	Estimated February Harvest (pounds)
VA	5,496	4,826 - 5,206
NC	62	0
Total	5,558	4,826 - 5,206

Wave 1 Sampling



Virginia

- Mandatory reporting of black sea bass harvest to VMRC
- VMRC sampled 4/33 private and 4/5 party boat trips
- Party boat and private trip average weights: 2.18 and 1.9 lbs, respectively
- About 550 law-enforcement hours during February

North Carolina

- MRIP staff reported zero intercepts with black sea bass north of Cape Hatteras in February
- NC DMF was unable to collect any carcasses due to low fishing effort (2 known trips)

Next Steps



- The Board and Council will consider a 2019 Wave 1 fishery at the August joint meeting.
- If desired, the Board and Council may task the Technical and Monitoring Committee to evaluate harvest estimates from VA and NC as part of their July meeting.