



# **Draft Amendment I Management Issues/Options and Public Comment Summary**

October 2017

Tautog Management Board

# Actions taken in August



## Actions taken at the August Board Meeting

- Set goals and objectives
- Ref points modified via board action
- Manage to a regional F and take action w/i 1 year when overfishing is occurring
- Stock rebuild programs via addendum
- Manage using 4 regions
- Set commercial quota procedures and a commercial tagging program

# Actions Before the Board



- Probability to achieve the F target
- F reduction schedule
- LIS Boundaries
- Management Measures for the 4 regions



# SECTION 2.0

# 5. Probability of Achieving F Target (pg. 55)

**Option A.** Status Quo.

**Option B.** 50% Probability of Achieving F Target

Option	MA	RI	CT	NY	NJ	DE	MD	VA	AP	WC
A							2		2	6
B	1	x						1	2	1

# 6. F Reduction Schedule (pg. 55-56)

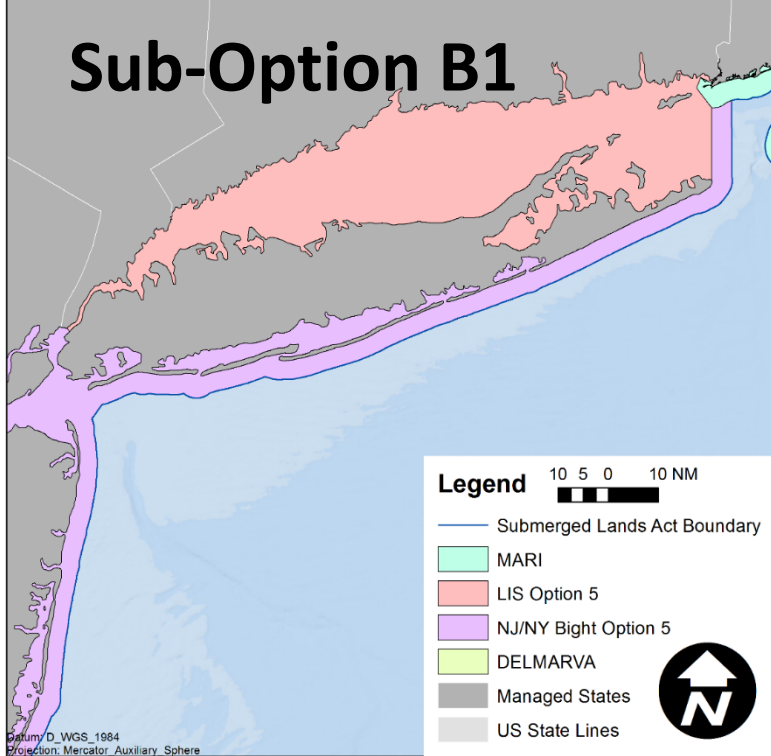
**Option A. Status Quo**

**Option B. Three Years**

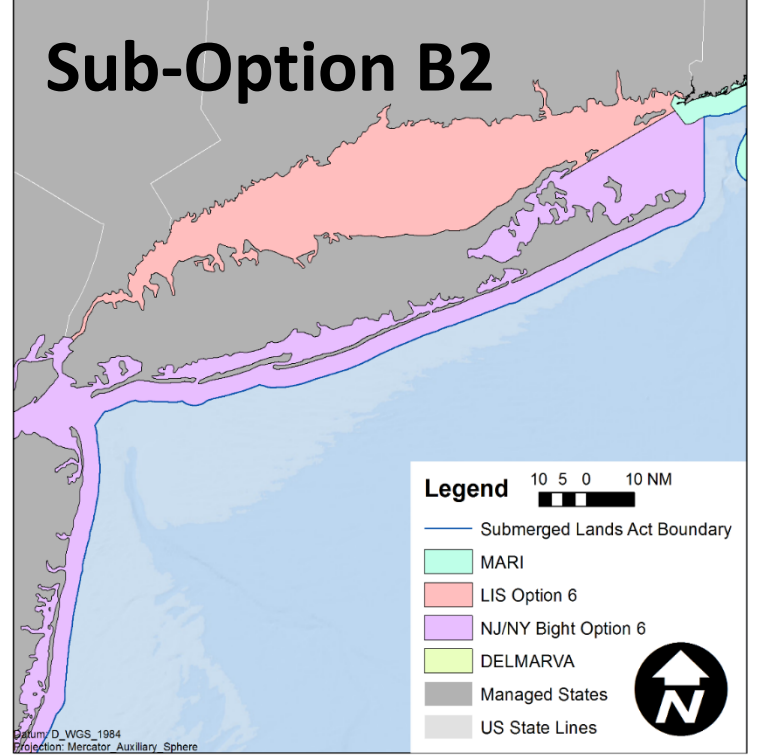
**Option C. Five Years**

Option	MA	RI	CT	NY	NJ	DE	MD	VA	AP	WC
A										
B	x	1						1		1
C							3		5	

# Sub-Option B1



# Sub-Option B2



Option	CT	NY	NJ	Written Comment
<b>B1</b>				2
<b>B2</b>				

# 1. Massachusetts-Rhode Island (starting on pg. 72)

No reductions needed, but options to create consistent regulations across the region are presented.



# MARI-Recreational



- Four seasons
  1. 3-fish bag limit from April 1 - May 31
  2. 1-fish bag limit from June 1 – July 31 in MA on (RI will remain closed)
  3. 3-fish bag limit from August 1 – October 14
  4. 5-fish bag limit from October 15 – December 31
- 16 inch size limit
- The TC found that the MARI proposal is technically sound and would result in an insignificant change in harvest and impact to the stock.

## 2. Long Island Sound (starting on pg. 74)

Overfishing is occurring; at minimum a 47.2% harvest reduction is required in order to achieve a 50% probability of achieving the F Target by 2021.

# LIS



<b>Option 1 20.3% Reduction</b>	<b>Minimum Length</b>	<b>Creel Limit</b>	<b>CT Days Open</b>	<b>NY Days Open</b>
<b>Spring Season</b>	16"	3 (-1)	30	30 (+30)
<b>Summer Season</b>		2	62	0
<b>Fall Season</b>		3 (-1)	50 (-8)	60 (-11)

<b>Option 2 30.5% Reduction</b>	<b>Minimum Length</b>	<b>Creel Limit</b>	<b>CT Days Open</b>	<b>NY Days Open</b>
<b>Spring Season</b>	17" (+1")	4	30	30 (+30)
<b>Summer Season</b>		2	62	0
<b>Fall Season</b>		4	58	71

<b>Option 3 18.4% Reduction</b>	<b>Minimum Length</b>	<b>Creel Limit</b>	<b>CT Days Open</b>	<b>NY Days Open</b>
<b>Spring Season</b>	16.5" (+.5")	4	30	30 (+30)
<b>Summer Season</b>		2	62	0
<b>Fall Season</b>		4	53 (-5)	63 (-8)

# LIS



<b>Option 4 27.0% Reduction</b>	<b>Minimum Length</b>	<b>Creel Limit</b>	<b>CT Days Open</b>	<b>NY Days Open</b>
<b>Spring Season</b>	<b>16"-19" Slot Limit</b>	4	30	30 (+30)
<b>Summer Season</b>		2	62	0
<b>Fall Season</b>		4	50 (-8)	60 (-11)

<b>Option 5 23.6% Reduction</b>	<b>Minimum Length</b>	<b>Creel Limit</b>	<b>CT Days Open</b>	<b>NY Days Open</b>
<b>Spring Season</b>	<b>16"</b>	3 (-1)	30	30 (+30)
<b>Summer Season</b>		2	62	0
<b>Fall Season</b>		3 (-1)	48 (-10)	57 (-14)

<b>Option 6 31.4% Reduction</b>	<b>Minimum Length</b>	<b>Creel Limit</b>	<b>CT Days Open</b>	<b>NY Days Open</b>
<b>Spring Season</b>	<b>16"-18" Slot Limit</b>	4	30	30 (+30)
<b>Summer Season</b>		2	62	0
<b>Fall Season</b>		4	58	71

# LIS TC Recommendations



- Board favor options that achieve the F target and threshold within the shortest timeframes, to the extent practicable.
- The longer the duration allowed for stock improvement, the more likely underlying uncertainties could have a negative impact on rebuilding.
- Make tautog an enforcement priority in
- After 3-5 years a performance review
- Increase data collection on discards to determine the response to management

### 3. New Jersey – New York Bight (starting on pg. 78)

Overfishing is occurring; at minimum a 2% harvest reduction is required in order to achieve a 50% probability of achieving the F Target by 2021.

# 3. New Jersey – New York Bight

*RECREATIONAL – state-specific reductions to current measures*

Option	State	Min. Size	Possession Limit	Open Season
<b>A1. State-specific reduction to current measures</b>	NYB	16"	4	Oct 6 - Dec 13
	NJ	15"	4	Jan 1 – Feb 28
			4	Apr 1 - 18
			1	Aug 21 – Nov 15
			6	Nov 16 – Dec 31

# 3. New Jersey – New York Bight

	Jan	Feb	Mar	Apr	May	Jun	Jul	Aug	Sept	Oct	Nov	Dec
<b>B1. 15" minimum size, 4 fish bag limit</b>												
NYB										4		
NJ									4			
<b>B2. 16" minimum size, 4 or 6 fish bag limit</b>												
NYB										4		
NJ	4								6			



# 3. New Jersey – New York Bight

*RECREATIONAL SLOT LIMIT: 15 – 18”, 4 fish bag limit*

		Jan	Feb	Mar	Apr	May	Jun	Jul	Aug	Sep	Oct	Nov	Dec
C1.	NYB												
	NJ												

**Proposed spawning closures are from June through July for the recreational and commercial fisheries**

# 3. New Jersey – New York Bight

*COMMERCIAL – state-specific reductions to current measures*

Option	State	Min. Size	Possession Limit	Open Season
A1. State-specific reduction to current measures	NYB	15"	25	Jan 1 - Feb 28; Apr 14 - Dec 31
	NJ		-	Jan 1 - 15; Jun 11 - 30; Nov 12 - Dec 31

# 3. NJ – NYB Commercial

## Proposed Regional Options

		Size	Quota/Bag	Jan	Feb	Mar	Apr	May	Jun	Jul	Aug	Sep	Oct	Nov	Dec
<b>B1.</b>	NYB	15"	28 fish	█	█	█	█	█	□	□	█	█	█	█	█
	NJ		-	█	█	█	█	□	□	□	□	█	█	█	█
<b>B2.</b>	NYB	16"	31 fish	█	█	█	█	█	□	□	█	█	█	█	█
	NJ		-	█	█	█	█	█	□	□	█	█	█	█	█
<b>B3.</b>	NYB	15"	65,486 lbs	█	█	█	█	█	□	□	█	█	█	█	█
	NJ		23,259 lbs	█	█	█	█	█	□	□	█	█	█	█	█

**Proposed spawning closures are from June through July for the recreational and commercial fisheries**

# 3. New Jersey – New York Bight

*COMMERCIAL SLOT LIMIT: 15 – 18”*

		Bag	Jan	Feb	Mar	Apr	May	Jun	Jul	Aug	Sep	Oct	Nov	Dec
C2.	NYB	34												
	NJ	-												

**Proposed spawning closures are from June through July for the recreational and commercial fisheries**

## 4. Delaware – Maryland – Virginia (starting on pg. 81)

No reductions needed, but options to create consistent regulations across the region are presented.

# 4. Delaware – Maryland - Virginia

## *RECREATIONAL – current measures*

Option	State	Size Limit	Possession Limits	Open Seasons
<b>Option A. Status Quo</b>	Delaware	15"	5	Jan 1 – Mar 31
			3	Apr 1 – May 11
			5	July 17 – Aug 31
			5	Sept 29 – Dec 31
	Maryland	16"	4	Jan 1- May 15
			2	May 16 – Oct 31
			4	Nov 1 – 26
	Virginia	16"	3	Jan 1 – April 30
Sept 20 – Dec 31				



# 4. Delaware – Maryland - Virginia

*RECREATIONAL – regional options shown below*

		Size	Jan	Feb	Mar	Apr	May	Jun	Jul	Aug	Sep	Oct	Nov	Dec
<b>B.</b>	DE	15"	4											
	MD	16"	4											
	VA	16"	4											

<b>C.</b>	DE	16"	5			3			5					
	MD		4											
	VA		3											

<b>D.</b>	DE	16"	4											
	MD		4											
	VA		4											

**Proposed spawning closures are in May and June**



# VA-Commercial Fishery



- If the recreational fishery is open for 2 weeks in May, VA would open the Commercial fishery for 2 weeks.
- TC found this would not have a significant impact on the stock.

# Implementation Schedule



- The PRT suggests an implementation date of January 1, 2018 for the measures contained in the Amendment except for the Commercial Tagging Program which would be implemented January 1, 2019 to allow states and industry time to develop the administrative process and the necessary equipment needed for an effective program.
- State Implementation plans should be submitted to the PRT by December 1, 2017 with the exception of tagging programs.



# Questions



# **2015 and 2016 FMP Review and Compliance for Tautog (*Tautoga onitis*)**

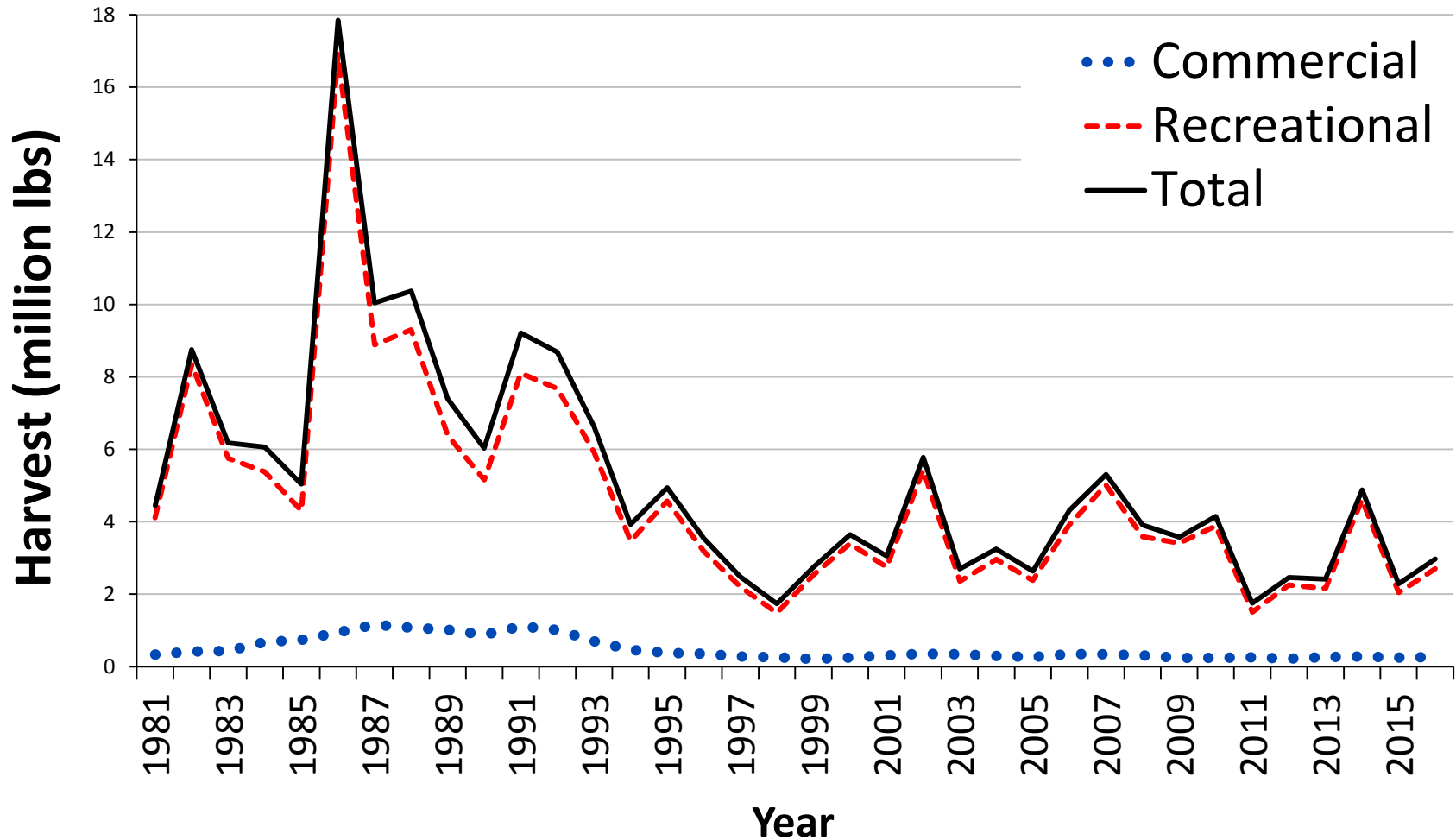


Presented to ASMFC Tautog Management Board  
October 16, 2017

# Commercial & Recreational Harvest



## Coastwide Tautog Harvest (1981-2016)



# Management Measures



- No changes to federal commercial or recreational measures
  - 14” minimum size
  - Degradable fasteners on one panel or door in pots and traps
  - State specific management programs to achieve target F

# Stock Status



- Benchmark stock assessment accepted in May 2015; assessment update completed in 2016
- 4 regional stocks: MARI, LIS, NJ-NYB, DMV

Region	$F_{\text{target}}$	$F_{\text{threshold}}$	$F_{3\text{yravg}}$	$SSB_{\text{target}}$	$SSB_{\text{threshold}}$	$SSB_{2015}$	MSY or SPR	Status
MARI	0.28	0.49	0.23	3,631 mt	2,723 mt	2,196 mt	SPR	Not overfished, overfishing not occurring
LIS	0.28	0.49	0.51	2,865 mt	2,148 mt	1,603 mt	MSY	Overfished, overfishing
NJ-NYB	0.20	0.34	0.54	3,154 mt	2,351 mt	1,809 mt	MSY	Overfished, overfishing
DMV	0.16	0.24	0.16	1,919 mt	1,447 mt	621 mt	SPR	Overfished, overfishing not occurring

# Compliance and De Minimis Request



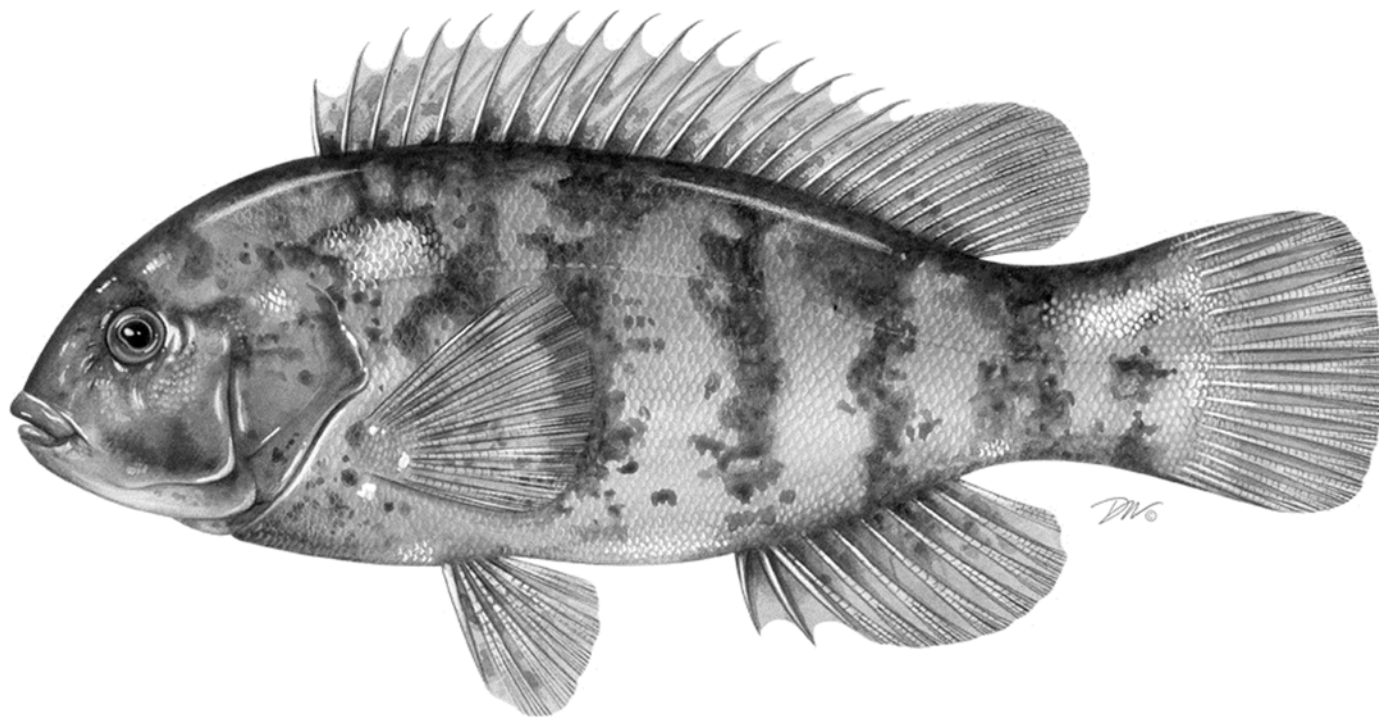
- *De Minimis requests*: Delaware, Maryland
  - DE and MD qualify for continued *de minimis status* for the commercial sector. The PRT recommends that the Board approve the states of Delaware and Maryland's requests.
- The PRT recommends the Board find all states in compliance with the sampling requirements of the FMP .



# PRT Recommendations



- As some states are unable to meet the 200 age/length sample requirement, the PRT suggests the required number of samples should be proportional to a state's harvest up to 200 samples, rather than set at a fixed number.
- The PRT recommends the TC be tasked with evaluating the biological sampling needs to support continued regional stock assessments for tautog, and recommending any revisions to the biological sampling requirements.



**Questions?**