



Draft Addendum IV for Public Comment



Review of Options
October 29, 2014

Addendum Timeline



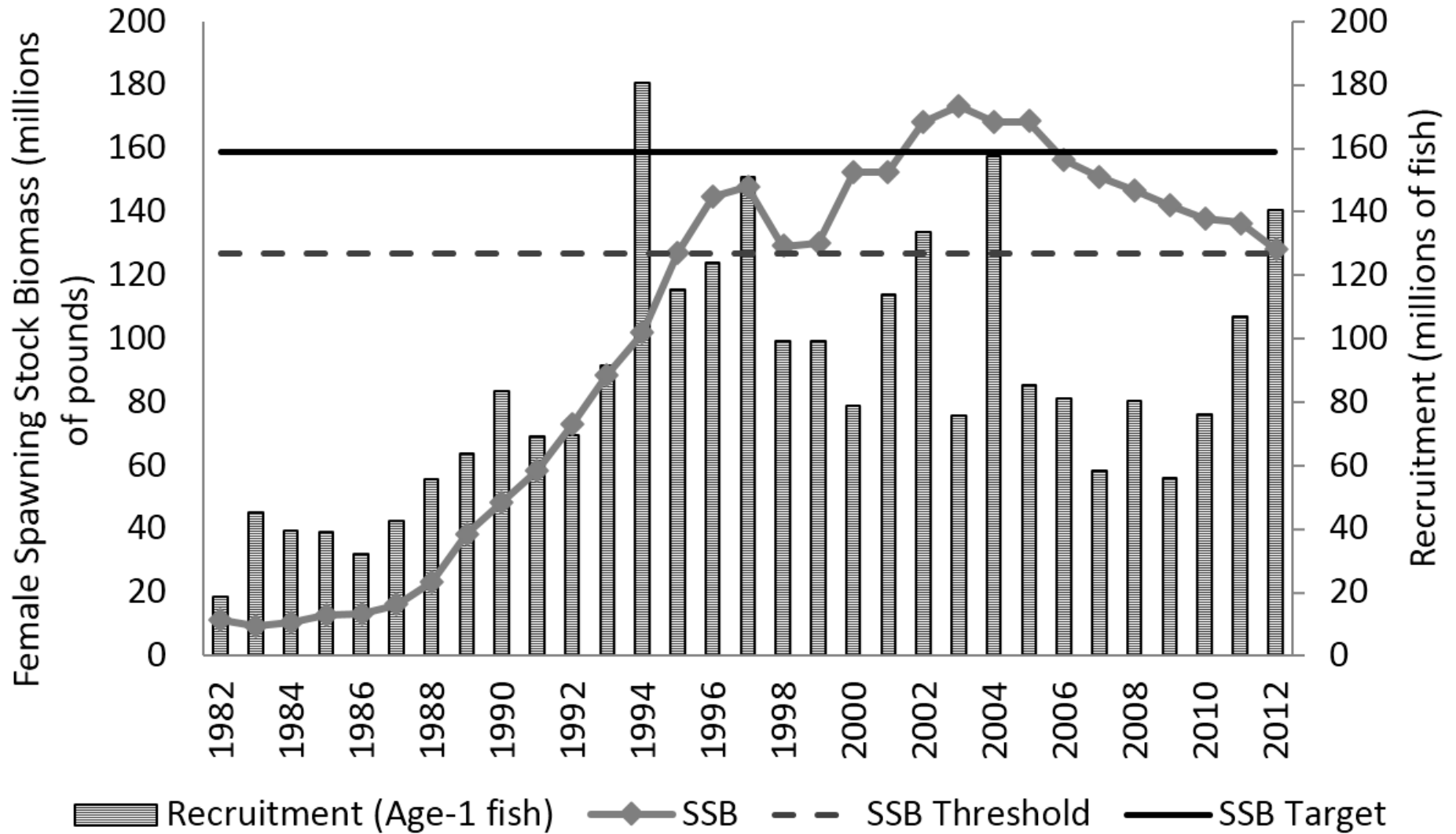
- Aug 2014: Consider approval of Draft Addendum for Public Comment
- Aug-Sept 2014: Public comment period
- October 2014: Board Reviews Public Comment
 - Final approval of options and Addendum
- January 2015: Implement Addendum measures

Statement of the Problem

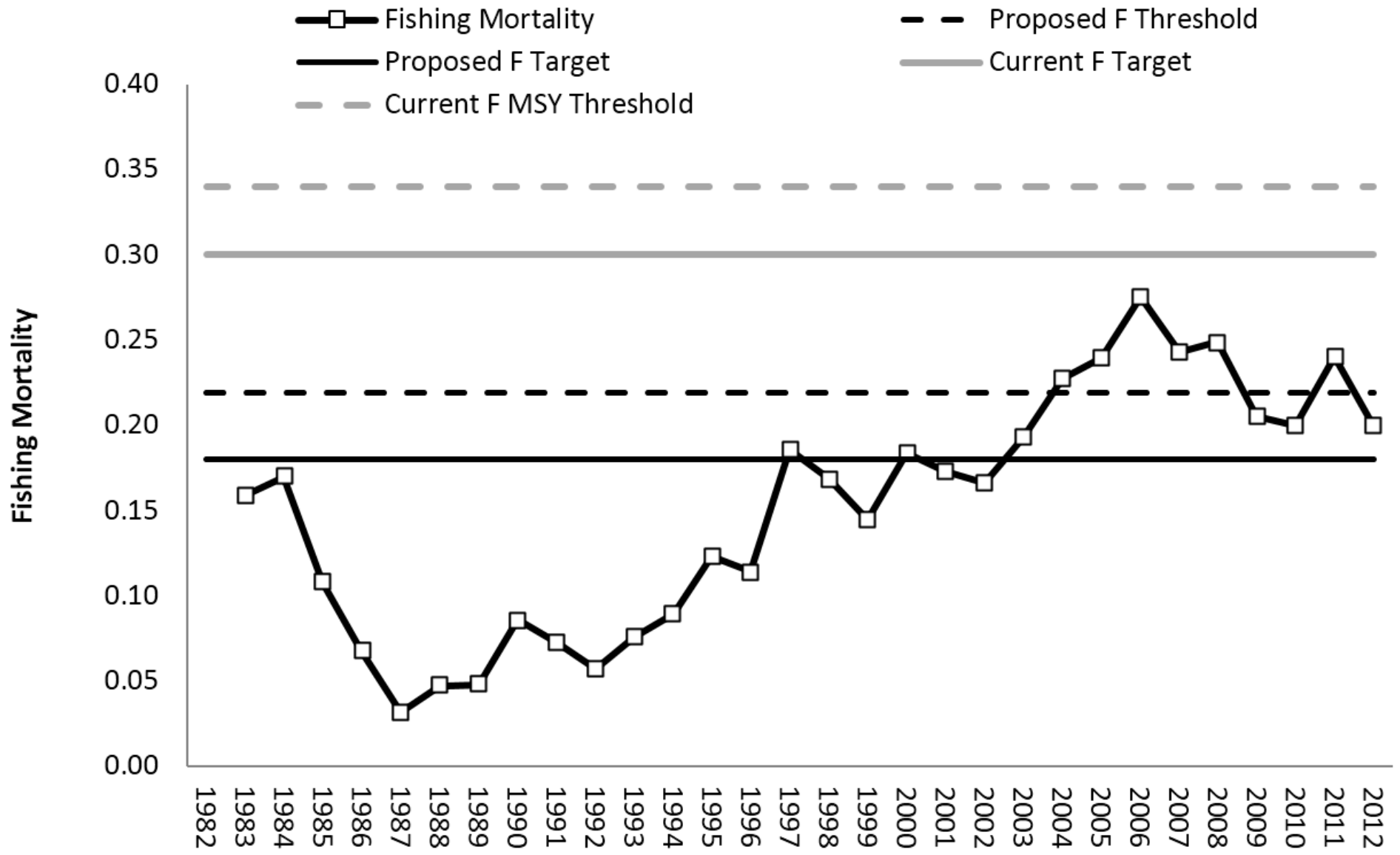


- New Proposed F reference points
- F is currently above new target
- SSB below target since 2006
- a similar downtrend in total harvest
- To address these concerns Draft Addendum IV contains management measures to reduce F to at level at or below the target within one or three years

Spawning Stock Biomass



Proposed Fishing Mortality Reference Points



Description of the Fishery



- The total coastal commercial harvest from 2003-2013 averaged 2.87 million pounds
- Approximately a 19% underage from allocated coastal quota after accounting for conservation equivalency
- Underage from striped bass game fish status in states
- Migratory striped bass have not been available to NC
- Ches Bay harvest has averaged 4.06 million pounds from 2003-2013.
- AS/RR harvest averaged 165,504 pounds over same timeframe

Description of the Fishery



- The total coastal recreational harvest from 2003-2013 averaged 26.4 million pounds
 - Chesapeake Bay harvest averaged 3.9 million pounds
 - AS/RR harvest averaged 111,598 pounds
- Landings from NY, MA, NJ, and MD account for approximately 74% of annual recreational landings since 2003.

2.5 Proposed F Reference Points



- The document considers F reference points for
 - (1) The Coastwide population
 - CB, Hudson, Delaware
 - (2) Chesapeake Bay Stock
 - (3) Albemarle Sound/Roanoke River Stock

2.5.1 Coastwide Population



- Option A: Status quo

Reference Point	Definition	Value (as estimated in 2011 update)
F_{threshold}	F _{msy}	0.34
F_{target}	TC recommended value more conservative than F _{msy}	0.30

- Option B: 2013 Benchmark Reference Points

Reference Point	Definition	Value (as estimated in 2013 benchmark stock assessment)
F_{threshold}	F associated with achieving the SSB threshold	0.22
F_{target}	F associated with achieving the SSB target	0.18

2.5.2 Chesapeake Bay Stock



- Option A: Status quo
 - F target is 0.27 as established in Amendment 6.
- Option B: Use coastwide population reference points
 - The TC cannot reach consensus on reference points for the CB management area at this time.
 - Coastwide reference points incorporate CB mortality on smaller fish and represent best scientific advice for management

2.5.3 Albemarle/Roanoke Stock



- Option A: Status quo
 - F target is 0.27 as established in Amendment 6.
- Option B: NC will manage the A/R Stock using reference points from the latest NC stock assessment that are accepted by the TC and approved for management use by the Board.

2.5.3 Albemarle/Roanoke Stock



- At its August 2014 meeting the Board accepted the NC stock assessment for management use.
- As a result the State of North Carolina plans to manage the A/R stock using a quota for both recreational and commercial fisheries that maintains SSB and F at their respective target levels.

2.6 Timeline To Reduce to F target



- *If the Management Board determines that the fishing mortality target is exceeded in two consecutive years and the female spawning stock biomass falls below the target within either of those years, the Management Board must adjust the striped bass management program to reduce the fishing mortality rate to a level that is at or below the target within one year.*
- **Option A:** Status quo: One year time frame
- Management Trigger 3 requires reducing F to a level at or below the target within one year.
- **Option B:** Three year time frame.
- Management Trigger 3 will be revised to require reducing F to a level at or below the target within three years instead of within one year.

3.0 Proposed Management Options



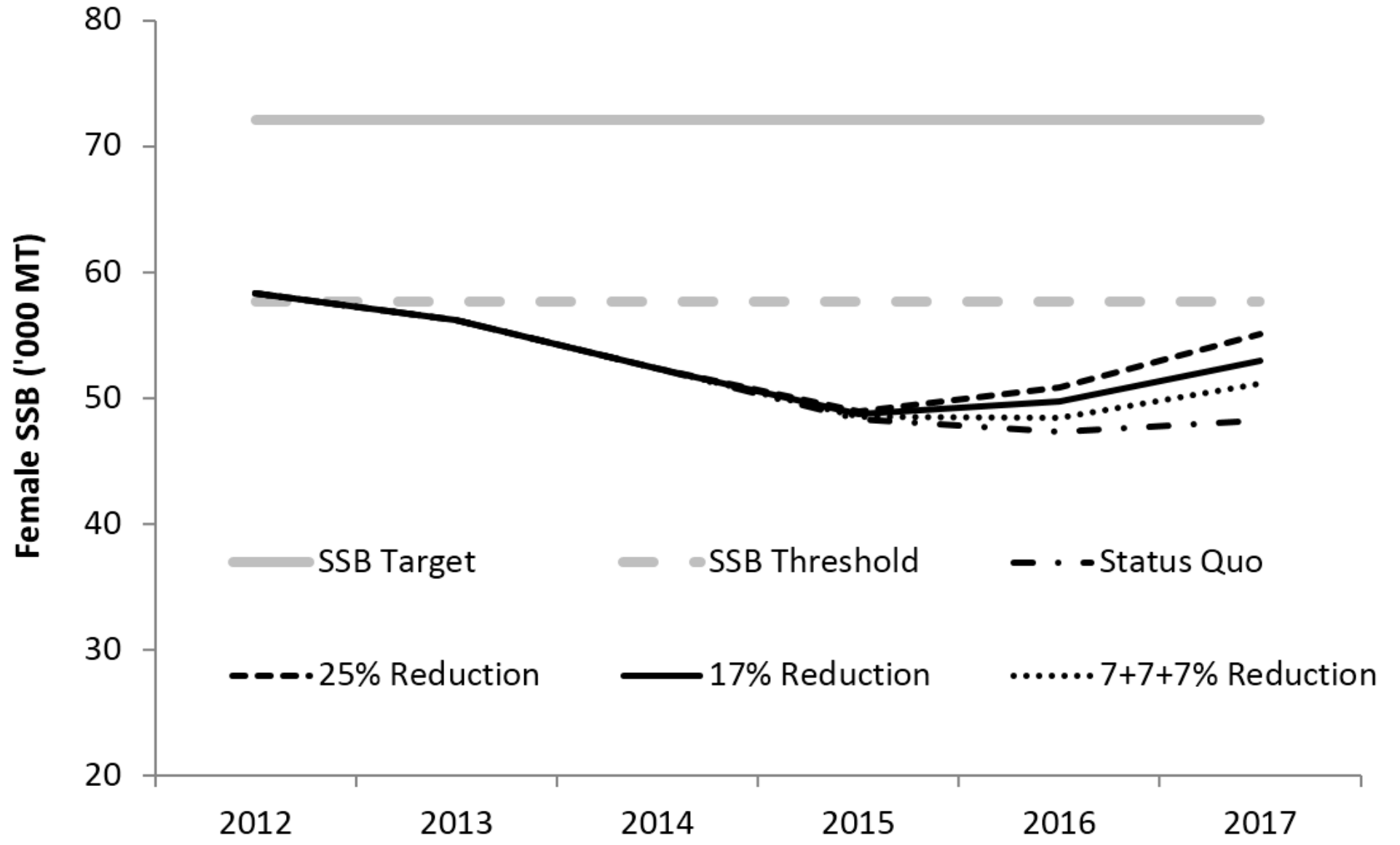
- Option A: Status Quo
- Option B: Reduce F to the target in one year with a 25% harvest reduction.
- Option C: Reduce F to the target within three years with a 17% harvest reduction.
- Option D: Reduce F to the target within three years with a stepwise 7+7+7% harvest reduction.

3.0 Proposed Management Options



- Recreational Fishery:
 - Coast: Bag and size limits
 - CB: Bag and size limits and quota
- Commercial Fishery:
 - Coast: reductions from Amendment 6 quota.
 - CB: Reductions from 2013 quota or 2012 harvest

SSB Projections



3.1 Commercial Quota Transfers



- Option A: Status quo, no commercial quota transfers
- Option B: Commercial Quota Transfer Provision
 - At any time during the fishing season up to 45 days after the last day of the fishing season.
 - Transfer effective upon receipt by Commission staff of signed letters by donor and receiving states.
 - Transfers do not permanently affect the state-specific shares of the quota
 - State receiving the quota is responsible for overages

3.2 Commercial Size Limits



- Option A: Status quo
 - Commercial fishery is constrained by the same size limit regime established for the recreational fishery
- Option B: All areas will maintain a 28 inch minimum size limit for the commercial fishery, except the CB (18 inch minimum), Albemarle Sound (18 inch minimum), and Delaware Bay shad gillnet fishery for Delaware (20 inch minimum).
 - This option only applies if the Board selects to change the size limits for recreational fishery.

4.0 Compliance Schedule



- If approved, states must implement Addendum IV according to the following schedule to be in compliance with the Atlantic Striped Bass ISFMP
- XXXX: States submit implementation plans
- XXXX: Management Board review and approval
- Jan 1, 2015: States implement regulations

Questions?



Option A: Status Quo



Option A: Status Quo

- Coastal Recreational Fishery
 - Two fish bag limit and 28 inch minimum size
- Coastal Commercial Fishery
 - Each state will be allocated 100% of the base period (1972-1979) average coastal commercial landings (Section 4.3.2 of Amendment 6).
- Chesapeake Bay
 - Maintain target $F=0.27$ with an 18 inch size limit
- Albemarle Sound/Roanoke River
 - Maintain target $F=0.27$ with an 18 inch size limit

Option B: Reduce F in One Year



Option B: 25% reduction from 2013 harvest to reduce F in one year.

Coastal Recreational Fishery

Option <small>Chart Area</small>	Bag Limit	Size limit	Trophy fish	% reduction from 2013 harvest
B1	1	28" min	n/a	31%
B2	1	30" min	n/a	greater than 31% ³
B3	1	32" min	n/a	greater than 31% ³
B4	1	28-40" slot	n/a	greater than 31% ³
B5	2	33" min	n/a	29%
B6	2	28-34" slot	n/a	28%
B7	2 (1 slot, 1 trophy)	1 fish 28-34" slot	1 fish 36" min	28% ³
B8	2 (1 slot, 1 trophy)	1 fish 28-36" slot	1 fish 38" min	26% ³
B9	2 (1 slot, 1 trophy)	1 fish 28-37" slot	1 fish 40" min	26% ³

³Reduction estimate limited by data

Option B: Reduce F in One Year



Option B: 25% reduction from 2013 harvest to reduce F in one year.

Chesapeake Bay Recreational Fishery

Option	Bag Limit	Size limit	Trophy fish	% reduction from 2013 harvest
B10	1	18" min	n/a	31%
B11	2	21" min	n/a	29%
B12	2	18-23" slot	n/a	26%
B13	2 (1 slot, 1 trophy or 2 slot)	1 or both 18-21" slot	1 fish 36" min	29%
B14	Chesapeake Bay Recreational Quota of 2,000,915 pounds (no established bag limit, but a minimum size of 18")			25%
B15	Chesapeake Bay Recreational Quota of 1,800,740 pounds (no established bag limit, but a minimum size of 18"). Quota is based on a 25% reduction from 2012 harvest.			32%

A/R Recreational Fishery

- Maintain F and SSB at A/R target using quota.

Option B: Reduce F in One Year



	For Reference	OPTION B16	For Reference
State	Am6 Quota (lbs)	25% reduction from Am6 Quota (lbs)	2013 Harvest (lbs)
Maine	250*	188	0
New Hampshire	5,750*	4,313	0
Massachusetts	1,159,750	869,813	1,002,519
Rhode Island	243,625†	182,719	231,280
Connecticut	23,750*	17,813	1,479
New York	1,061,060†	795,795	823,801
New Jersey	321,750**	241,313	6,096
Delaware	193,447	145,085	191,424
Maryland	131,560†	98,670	93,532
Virginia	184,853	138,640	182,427
North Carolina	480,480	360,360	0
Coastal Total	3,806,275	2,854,706	2,532,558
% Diff from 2013 harvest	+50	+13	0

Option B: Reduce F in One Year



Chesapeake Bay Commercial Fishery

- **Option B17:** Takes a 25% reduction from the 2013 commercial quota.
- **Option B18:** Takes a 25% reduction from 2012 commercial harvest

	For Reference	Option B17	Option B18	For Reference
Chesapeake Bay	2013 Harvest (lbs)	25% reduction from 2013 Quota (lbs)	25% reduction from 2012 harvest	2012 Harvest (lbs)
	3,293,337	2,666,024	2,943,629	3,924,839
% Diff from 2013 harvest	0	-19	-11	19
% Diff from 2012 harvest	-19	-32	-25	0

A/R Commercial Fishery : Maintain F and SSB at A/R target using quota.

Option C: Reduce F within 3 Years



- **Option C: 17% reduction from 2013 total harvest starting in 2015 fishing year. Hold management constant to reduce F in 3 years.**

Coastal Recreational Fishery

Option	Bag Limit	Size limit	Trophy fish	% reduction from 2013 harvest
C1	2	32"	n/a	21%
C2	2	28-36"	n/a	19%
C3	2 (1 slot, 1 trophy)	1 fish 28-35"	1 fish ≥ 35 "	20% ⁴

⁴Reduction estimate limited by data

Option C: Reduce F within 3 Years



- **Option C: 17% reduction from 2013 total harvest starting in 2015 fishing year. Hold management constant to reduce F in 3 years.**

Chesapeake Bay Recreational Fishery

Option	Bag Limit	Size limit	Trophy fish	% reduction from 2013 harvest
C4	2	20" min	n/a	22%
C5	2	18-26" slot	n/a	18%
C6	2 (1 slot, 1 trophy or 2 slot)	1 or both 18-23" slot	1 fish 36" min	19%
C7	Chesapeake Bay Recreational Quota of 2,214,345 pounds (no established bag limit, but a minimum size of 18")			17%
C8	Chesapeake Bay Recreational Quota of 1,992,819 pounds (no established bag limit, but a minimum size of 18"). Quota is based on a 17% reduction from 2012 harvest.			25%

A/R Recreational Fishery

- **Maintain F and SSB at A/R target using quota.**

Option C: Reduce F within 3 Years



	For Reference	OPTION C9	For Reference
State	Am6 Quota (lbs)	17% reduction from Am6 Quota	2013 Harvest (lbs)
ME	250*	208	0
NH	5,750*	4,773	0
MA	1,159,750	962,593	1,002,519
RI	243,625†	202,209	231,280
CT	23,750*	19,713	1,479
NY	1,061,060†	880,680	823,801
NJ	321,750**	267,053	6,096
DE	193,447	160,561	191,424
MD	131,560†	109,195	93,532
VA	184,853	153,428	182,427
NC	480,480	398,798	0
Total	3,806,275	3,159,208	2,532,558
% Diff 2013	+50	+25	0

Option C: Reduce F within 3 Years



Chesapeake Bay Commercial Fishery

- **Option C10:** Takes a 17% reduction from the 2013 commercial quota.
- **Option C11:** Takes a 17% reduction from 2012 commercial harvest.

	For Reference	Option C10	Option C11	For Reference
Chesapeake Bay	2013 Harvest (lbs)	17% reduction from 2013 Quota (lbs)	17% reduction from 2012 harvest (lbs)	2012 Harvest (lbs)
	3,293,337	2,950,400	3,257,616	3,924,839
% Diff from 2013 harvest	0	-10	-1	19
% Diff from 2012 harvest	-19	-25	-17	0

Option D: Reduce F within 3 Years (Stepwise)



Option D: a 20% reduction from 2013 total harvest achieved with a 7% reduction each year for three consecutive years starting in 2015.

Coastal Recreational Fishery

- **Option D1:** Size limit changes with corresponding implementation year shown below

Year	Bag Limit	Size limit	Trophy fish	% reduction
2015	2	30"	n/a	Approximately a 21% reduction from 2013 harvest over three years
2016	2	31"	n/a	
2017	2	32"	n/a	

Option D: Reduce F within 3 Years (Stepwise)



Chesapeake Bay Recreational Fishery

- Option D2: size limit changes by year

Year	Bag Limit	Size limit	Trophy fish	% reduction
2015	2	19"	n/a	Approximately a 22% reduction from 2013 harvest over three years
2016	2	20"	n/a	
2017	2	20"	n/a	

- Option D3: size limit changes by year

Year	Bag Limit	Size limit	Trophy fish	% reduction
2015	2	18-35"	n/a	Approximately a 19% reduction from 2013 harvest over three years
2016	2	18-28"	n/a	
2017	2	18-24"	n/a	

Option D: Reduce F within 3 Years (Stepwise)



Chesapeake Bay Recreational Fishery

- Option D4: Quota with reductions applied to 2013 harvest

Year	Quota	Size limit	Trophy fish	% reduction
2015	2,481,134	18"	n/a	Approximately a 20% reduction from 2013 harvest over three years
2016	2,307,455	18"	n/a	
2017	2,145,933	18"	n/a	

- Option D5: Quota with reductions applied to 2012 harvest

Year	Quota	Size limit	Trophy fish	% reduction
2015	2,232,918	18" min	n/a	Approximately a 28% reduction from 2013 harvest over three years
2016	2,076,614	18" min	n/a	
2017	1,931,251	18" min	n/a	

A/R Recreational Fishery

- Maintain F and SSB at A/R target using quota.

Option D: Reduce F within 3 Years (Stepwise)



Coastal Commercial Fishery

- **Option D6:** Takes a sequential 7% reduction from the Amendment 6 quota for three consecutive years.

	OPTION D6	2015	2016	2017
State	For Reference Am6 Quota (lbs)	7% reduction from Am6 Quota (lbs)	7% reduction from 2015 Quota (lbs)	7% reduction from 2016 Quota (lbs)
Maine	250*	233	216	201
New Hampshire	5,750*	5,348	4,973	4,625
Massachusetts	1,159,750	1,078,568	1,003,068	932,853
Rhode Island	243,625†	226,571	210,711	195,961
Connecticut	23,750*	22,088	20,541	19,103
New York	1,061,060†	986,786	917,711	853,471
New Jersey	321,750**	299,228	278,282	258,802
Delaware	193,447	179,906	167,312	155,600
Maryland	131,560†	122,351	113,786	105,821
Virginia	184,853	171,913	159,879	148,688
North Carolina	480,480	446,846	415,567	386,477
Coastal Total	3,806,275	3,539,836	3,292,047	3,061,604
% Diff from 2013 harvest	+50	+40	+30	+21

Option D: Reduce F within 3 Years (Stepwise)



Chesapeake Bay Commercial Fishery

- **Option D7:** Takes a 7% sequential reduction from 2013 Chesapeake Bay commercial quota for three consecutive years starting in 2015.

	Option D7	2015	2016	2017
Chesapeake Bay	For Reference 2013 Harvest	7% reduction from 2013 Quota	7% reduction from 2015 Quota	7% reduction from 2016 Quota
	3,293,337	3,305,870	3,074,459	2,859,247
% Diff from 2013 harvest	0	0	-7	-13
% Diff from 2012 harvest	-16	-16	-22	-27

Option D: Reduce F within 3 Years (Stepwise)



Chesapeake Bay Commercial Fishery

- **Option D8:** Takes a 7% sequential reduction from 2012 Chesapeake Bay commercial harvest for three consecutive years starting in 2015.

	Option D8	2015	2016	2017
Chesapeake Bay	For Reference 2013 Harvest	7% reduction from 2012 harvest	7% reduction from 2015 Quota	7% reduction from 2016 Quota
	3,293,337	3,650,100	3,394,593	3,156,972
% Diff from 2013 harvest	0	+11	+3	-4
% Diff from 2012 harvest	-16	-7	-14	-20

A/R Commercial Fishery

- Maintain F and SSB at A/R target using quota.



Draft Addendum IV for Public Comment



Public Comment Summary

October 27, 2014

Public Hearing Summary



- Nineteen public hearings in all 12 states & PRFC
- Approximately 874 attendees at all hearings
 - 40% in New England
 - 44% in Mid Atlantic
 - 16% in Chesapeake Bay

Public Hearing Summary



- Recreational Fishery (Majority)
 - Adopt new proposed F reference points
 - Act now and reduce F to the target within 1 year
 - One fish bag limit and 32” size limit
 - Some charter boats favor two fish bag
 - 25% reduction from commercial quota, but should be harvest
 - Reduce mortality in all areas including Ches Bay
 - Sentiment was manage for abundance and opportunity

Public Hearing Summary



- Commercial Fishery
 - Data being used in stock assessment are flawed
 - Favored status quo or 7+7+7% reduction.
 - Concerned about socio-economic impacts no analysis conducted
 - Increasing striped bass population may impact prey
- Chesapeake Bay
 - Disappointed TC unable to develop F reference pts
 - Bay harvest is predominately male
 - Favored status quo or 7+7+7% reduction.
 - Take reductions from 2012 harvest not 2013 quota
 - Concerned about disease and prey for striped bass

Public Hearing Summary



- Common Issues
 - Illegal harvest (poaching) in rec and comm fisheries
 - Public noted USCG has had more presence
 - Suggested increase fines and step up enforcement

Written Public Comment Summary



- 3,847 written comments received
 - 2,490 were from 13 different form letters
 - 1,323 were personalized individual comment
 - 34 letters were from groups or organizations

Group and Organization Comments



- American Sportfishing Association
- Anglers Conservation Network
- Berkeley Striper Club
- Cape Cod Charter Boat Association
- Coastal Conservation Association
- CCA VA
- Congressional Sportsmen's Foundation
- Connecticut Surfcasters Association
- Forked River Tuna Club
- Hi-Mar Striper Club, Middletown, New Jersey
- Maine Association of Charter Boat Captains
- Manasquan River Marlin and Tuna Club
- Maryland Charter Board Association
- Maryland Saltwater Sportfishing Association
- Massachusetts Striped Bass Association
- Milford Striped Bass Club
- Montauk Boatmen and Captains Association
- Montauk Chamber of Commerce
- New Jersey Beach Buggy Association
- New York Fishing and Tackle Trade Association
- New York Sportfishing Federation
- New Jersey Council of Diving Clubs
- New Jersey Marine Fisheries Council
- North Folk Captains Association
- Peninsula Saltwater Sport Fisherman's Association
- Plum Island Surfcasters
- Rhode Island Party and Charter Boat Association
- Recreational Fishing Alliance
- Rhody Fly Rodders
- Saltwater Anglers of Bergen County
- Save the Bay
- Solomons Charter Captains Association
- Stripers Forever
- Virginia Waterman's Association
- Wild Oceans

Representative Comments



- Massachusetts Representative James M. Cantwell
- Massachusetts Representative Vinny deMacedo
- Massachusetts Representative Tom Calter
- Massachusetts Senator Robert Hedlund
- Massachusetts Representative Brad Hill
- New York Assemblyman Fred Thiele
- Virginia Congressman Robert Wittman
- Virginia Delegate Margaret Ransone

Public Comment Summary Table



2.5.1 <u>Coastwide</u> Population Reference Point Options	Option	Total
Status quo, F reference points based on MSY	A	13
2013 benchmark stock assessment F ref pts	B	947
2.5.2 CB Stock Reference Point Options		
Status quo, F target = 0.27	A	19
Use <u>coastwide</u> F reference points from section 2.5.1	B	418
2.5.3 A/R Stock Ref Pt Options		
Status quo, F target = 0.27	A	2
NC will manage A/R stock at F and SSB targets	B	71
2.6 Timeline to Reduce F to the Target		
One year timeframe	A	1,079
Three year timeframe	B	73

Public Comment Summary Table



3.0 Proposed Management Program	Option	Total
Status quo, maintain current management program	A	214
Reduce F to the target in 1 year. 25% harvest reduction	B	3,500
Reduce F to the target in 3 yrs. 17% harvest reduction	C	29
Reduce F to the target in 3 yrs. 7+7+7% harvest reduction	D	75

Public Comment Summary Table



Option B: 25% reduction from 2013 harvest to reduce F in one year.

Coastal Recreational Fishery (All jurisdictions would implement)

Bag Limit	Size limit	Trophy fish	% reduction from 2013 harvest	Option	Total
1	28" min	none	31%	B1	333
1	30" min	none	> 31% ¹	B2	77
1	32" min	none	> 31% ¹	B3	2,223
1	28-40" slot	none	> 31% ¹	B4	139
2	33" min	none	29%	B5	23
2	28-34" slot	none	28%	B6	48
2 (1 slot, 1 trophy)	1 fish 28-34" slot	1 fish 36" min	28% ¹	B7	317
2 (1 slot, 1 trophy)	1 fish 28-36" slot	1 fish 38" min	26% ¹	B8	17
2 (1 slot, 1 trophy)	1 fish 28-37" slot	1 fish 40" min	26% ¹	B9	11

Public Comment Summary Table



Option B: 25% reduction from 2013 harvest to reduce F in one year.

Bag Limit	Size limit	Trophy fish	% reduction from 2013 harvest	Option	Total
1	18" min	none	31%	B10	69
2	21" min	none	29%	B11	8
2	18-23" slot	none	26%	B12	6
2 (1 slot, 1 trophy or 2 slot)	1 or both 18-21" slot	1 fish 36" min	29%	B13	287
Chesapeake Bay Recreational Quota of 2,000,915 pounds (no established bag limit, minimum size of 18")			25%	B14	0
Chesapeake Bay Recreational Quota of 1,800,740 pounds (no established bag limit, minimum size of 18"). Quota is based on a 25% reduction from 2012 harvest.			32%	B15	36

Public Comment Summary Table



Option B: 25% reduction from 2013 harvest to reduce F in one year.

Coastal Commercial Fishery	Option	Total
Take a 25% reduction from Amendment 6 quota	B16	141
Chesapeake Bay Management Area Commercial Fishery		
Takes a 25% reduction from 2013 commercial bay quota	B17	363
Takes a 25% reduction from 2012 commercial bay harvest	B18	19

Public Comment Summary Table



Option C: Reduce F to the target within three years with a 17% harvest reduction.

Coastal Recreational Fishery

Bag Limit	Size limit	Trophy fish	% reduction from 2013 harvest	Option	Total
2	32" min	none	21%	C1	10
2	28-36" slot	none	19%	C2	2
2 (1 slot, 1 trophy)	1 fish 28-35" slot	1 fish 35" min	20% ²	C3	19

Chesapeake Bay Fishery

Bag Limit	Size limit	Trophy fish	% reduction from 2013 harvest	Option	Total
2	20" min	none	22%	C4	9
2	18-26" slot	none	18%	C5	3
2 (1 slot, 1 trophy or 2 slot)	1 or both 18-23" slot	1 fish 36" min	19%	C6	2
Chesapeake Bay Recreational Quota of 2,214,345 pounds (no established bag limit, but a minimum size of 18")			17%	C7	0
Chesapeake Bay Recreational Quota of 1,992,819 pounds (no established bag limit, but a minimum size of 18"). Quota is based on a 17% reduction from 2012 harvest.			25%	C8	1

Public Comment Summary Table



Option C: Reduce F to the target within three years with a 17% harvest reduction.

Coastal Commercial Fishery	Option	Total
Take a 17% reduction from Amendment 6 quota	C9	4
Chesapeake Bay Management Area Commercial Fishery		
Takes a 17% reduction from 2013 commercial bay quota	C10	1
Takes a 17% reduction from 2012 commercial bay harvest	C11	7

Public Comment Summary Table



Option D: Reduce F to the target within three years with a stepwise 7+7+7% harvest reduction

Coastal Recreational Fishery

Option D1: Size limit changes with corresponding implementation year are shown below.

Year	Bag Limit	Size limit	% reduction	Total
2015	2	30" min	Approximately a 21% reduction from 2013 harvest over three years	39
2016	2	31" min		
2017	2	32" min		

Public Comment Summary Table



Chesapeake Bay Recreational Fishery

Option D2: Size limit changes with corresponding implementation year are shown below.

Year	Bag Limit	Size limit	% reduction	Total
2015	2	19" min	Approximately a 22% reduction from 2013 harvest over three years	2
2016	2	20" min		
2017	2	20" min		

Option D3: Slot limit changes with corresponding implementation year are shown below.

Year	Bag Limit	Size limit	% reduction	Total
2015	2	18-35" slot	Approximately a 19% reduction from 2013 harvest over three years	2
2016	2	18-28" slot		
2017	2	18-24" slot		

Option D4: Chesapeake Bay Recreational Quota (Baywide). Reductions applied to 2013 harvest.

Year	Quota	Size limit	% reduction	Total
2015	2,481,134	18" min	Approximately a 20% reduction from 2013 harvest over three years	0
2016	2,307,455	18" min		
2017	2,145,933	18" min		

Option D5: Chesapeake Bay Recreational Quota (Baywide). Reductions applied to 2012 harvest.

Year	Quota	Size limit	% reduction	Total
2015	2,232,918	18" min	Approximately a 28% reduction from 2013 harvest over three years	2
2016	2,076,614	18" min		
2017	1,931,251	18" min		

Public Comment Summary Table



Option D: Reduce F to the target within three years with a stepwise 7+7+7% harvest reduction

Coastal Commercial Fishery	Option	Total
Takes a 7+7+7% reduction from Amendment 6 quota	D6	8
Chesapeake Bay Management Area Commercial Fishery		
Takes a 7+7+7% reduction from 2013 commercial bay quota	D7	0
Takes a 7+7+7% reduction from 2012 commercial bay harvest	D8	18

Public Comment Summary Table



3.1 Commercial Quota Transfers	Option	Total
Status quo, no commercial quota transfers between states.	A	907
Commercial quota transfers may occur between states.	B	13
3.2 Commercial Size Limits		
Commercial size limits would change with a change in recreational size	A	447
Commercial size limits would remain unchanged.	B	107

General Other Comments



- Both commercial and recreational regulations should reduce mortality.
- Poaching must be addressed.
- Require the use of circle hooks and restrict use of gear that results in high mortality.
- Do not allow, or limit, striped bass tournaments.
- Industry is seeing a decline on the water
- A declining striped bass population will result in economic impacts to businesses.
- Stricter fishing regulations will result in negative economic impacts to the industry.
- Stock assessment biases result in uncertainty.

General Other Comments



- Declare gamefish status coast wide, making the striped bass fishery strictly recreational.
- Do not allow charters to include their crew when determining the trip's possession limit.
- Options only have a 50% probability of success, which is risky
- The fishery should be catch and release only.
- None of the commercial scenarios achieve the necessary reduction.

General Other Comments



- Stronger restrictions for the commercial fishery (e.g., moratorium, 50% reduction).
- Charter boats (for hire) should not be regulated separately.
- Establish a saltwater licensing fee to pay for additional law enforcement.
- Do not allow the transfer of commercial quota to be harvested recreationally through bonus fish programs.
- Take pressure off of large breeding females and do not allow for the take of trophy fish.

General Other Comments



- Cut the coastal quota and increase the Bay quota to save the blue crab industry.
- The Chesapeake Bay should not have a more liberal bag limit
- Encourage the protection, maintenance, and enhancement of habitat.
- There is a depletion of forage species preyed upon by the striped bass.

General Other Comments



- Research mycobacteriosis and its impacts on the striped bass population.
- Set policy with the goal of increasing abundance, not maximizing harvest.
- Preserve the 2011 year class.
- Reevaluate fishing seasons.
- Obtain reference points for the Chesapeake Bay.



Biological Implications of Atlantic Striped Bass Draft Addendum IV

Technical Committee Report
October 29, 2014

2.5 Fishing Mortality Reference Points



- The proposed F_{target} ($F=0.18$) and $F_{\text{threshold}}$ ($F=0.23$) are expected to maintain long-term average SSB at or near the corresponding SSB_{target} and $SSB_{\text{threshold}}$
- However, there is a probability of SSB occasionally declining below the $SSB_{\text{threshold}}$ even while F is maintained at the F_{target}
- But SSB is expected to recover without additional management action as long as F is maintained at or below F_{target}

2.6 Timeline To Reduce F to the Target



- Reducing F to the F_{target} in one year will be more beneficial to increasing SSB and protecting the 2011 year class than reducing in three years
- However, higher levels of SSB do not necessarily result in stronger year classes

3.0 Proposed Management Program



Option A: Status Quo

- If total harvest remains unchanged (status quo), there is less than a 1% probability that F will be at or below its target within one or three years

3.0 Recreational Fishery Options



Option B: Reduce F to target within one year with a 25% harvest reduction-Coastal

- The TC has greater certainty in the percent reductions of simple management measures (e.g., changes in bag or size limits) relative to more complex measures (e.g., slot or trophy fish options)
- Changes in angler behavior (e.g., effort, discards, poaching) may impact the percent reductions in harvest and there is no way to quantitatively account for this

3.0 Recreational Fishery Options



Option B: Reduce F to target within one year with a 25% harvest reduction-Coastal

- The TC is unable to quantify biological benefits of one option over another because of uncertainties in the projections (e.g., selectivity patterns, fecundity, stock specific exploitation, maturity schedule)
- The TC does not recommend a specific recreational management option, but reminds the Board that more simple management measures has been successful when managing striped bass in the past

3.0 Recreational Fishery Options



Option B: Reduce F to target within one year with a 25% harvest reduction-Chesapeake Bay

- If the Board is concerned about conserving the 2011 year class, then option B12 (i.e., slot limit) for the Bay recreational fishery would be the least preferred option
- The TC discussed that the use of a recreational quota was a helpful option to maintain a stable fishery in the Bay

3.0 Recreational Fishery Options



Option B: Reduce F to target within one year with a 25% harvest reduction-Chesapeake Bay

- The Chesapeake Bay trophy fishery is accounted for in the harvest reduction analysis
- Therefore options B10, B11, B14 and B15 assume the 28" for MD and 32" for VA spring trophy fisheries
- Option B12 assumes no trophy fisheries, and option B13 assumes the trophy fishery is operating at 36"

3.0 Recreational Fishery Options



Option C: Reduce F to target within three years with a 17% harvest reduction

- A constant harvest strategy held for several years is better for management evaluation than regulations that are constantly changing

3.0 Recreational Fishery Options



Option D: Reduce F to target within three years
with a stepwise 7+7+7% harvest reduction

- The TC cautions that it is difficult to evaluate management when regulations are constantly changing

3.0 Commercial Fishery Options



- The TC cautions that none of the proposed commercial quota options (B, C or D) achieve the necessary level of harvest reductions
- The TC recommends taking the necessary harvest reduction from 2013 total commercial harvest level, and letting the Board handle the re-allocations as they see fit

3.1 Commercial Quota Transfers



- The TC is concerned that if the percent reductions in commercial harvest are taken from the Amendment 6 quota instead of the 2013 level of harvest, allowing transfers has the potential to increase harvest
- The TC recommends that if transfers are used, conservation equivalency needs to be maintained between the states if they have different size limits

3.1 Commercial Size Limits



- The TC does not recommend matching the commercial and recreational size limits
- The TC recommends maintaining the same minimum size limits because the percent reductions are applicable to the current fishery selectivities
- The TC is also concerned that an increase in the commercial size limits may result in more discards
- The TC recommends Option B

General Comment



- The TC states that changes in MRIP methodology and implementation will make it more difficult to assess changes in harvest moving forward



Draft Addendum IV for Public Comment



Advisory Panel Report
October 29, 2014

2.5.1 Coastwide Reference Points



- Recreational and charter boat representatives preferred option B, adoption of the new proposed reference points.
- Commercial representatives preferred option A because the assessment uses flawed data.

2.5.2 Chesapeake Bay Stock



- There was some support for option A, status quo because the coastwide reference points don't incorporate harvest in the CB is predominately male.
- There was some support for option B because it is the best science available right now.

2.5.3 Albemarle/Roanoke Stock



- The AP was in support of option B because NC will manage the stock at its target levels.

2.6 Timeline To Reduce to F target



- Some were in favor of option A reduce F to the target in one year.
 - Recreational sector not seeing striped bass
 - Don't delay, act now
 - Only 50% probability of achieving F target
- Some were in favor of option B reduce F to the target within three years.
 - Reduced economic impacts to the industry.
 - We could easily adjust the management trigger and still achieve the goal.
 - The three year approach gives good flexibility.

Option A: Status Quo



Option A: Status Quo

- No Comments

Option B: Reduce F in One Year



Option B: 25% reduction from 2013 harvest to reduce F in one year.

- A representative supported B1 for the recreational fishery and B7 for the charter to allow 2 fish.
- Multiple were in support of option B3. Specific comments included:
 - Multiple charter boat representative support the most conservative option
 - Think about the economic impacts to the hotels, tackle stores, and other business
- Multiple were in support of option B3. Specific comments included:

Option C: Reduce F within 3 Years



- **Option C: 17% reduction from 2013 total harvest starting in 2015 fishing year. Hold management constant to reduce F in 3 years.**
- Member noted this option violates the current management trigger in Amendment 6.
- Member noted the three year timeframe may help with the current carrying capacity issue that is happening in the Chesapeake Bay
 - There may be a trophic collapse if striped bass abundance increases
 - Disease may spread from increased abundance

Option D: Reduce F within 3 Years (Stepwise)



Option D: a 20% reduction from 2013 total harvest achieved with a 7% reduction each year for three consecutive years starting in 2015.

- An AP member noted it is the least conservative and most risky.
- Some charter for hire supported D1
- Other AP members supported D2, D6.
- Support for taking reduction from 2012 harvest instead of 2013 in the Chesapeake Bay.

3.1 Commercial Quota Transfers



- Recreational representatives were in support of option A because the purpose of addendum is to reduce F and transferring unused commercial quota would likely increase mortality.
- Commercial representative supported option B because it provides management flexibility.
 - Quota transfer works well for bluefish. Allow flexibility, but it doesn't necessarily have to get used.
 - The stock can sustain the harvest allowed by the quota level so transferring doesn't put increased pressure on the resource.

3.2 Commercial Size Limits



- Commercial representatives were in support of option B.
 - Changing mesh size is burdensome to the industry.
 - There would be dead discards if the commercial size limit changed.
 - Bycatch mortality can be minimized if you allow that harvest until the quota is caught and then be done.
 - States have fine-tuned their fishing to minimize bycatch mortality.

General Comments



- All reductions need to be based on the same 2013 harvest numbers and the fishery should be managed with a common denominator.
- The management board should consider triggers to revert back to similar regulations as we have now (i.e., sunset provision).
- The AP also discussed the importance of forage for striped bass health.